



HSC
Assessment
Handbook
Year 12 2024



College Vision

To educate young women in the Josephite tradition that empowers them to act justly and to lead lives as disciples of Jesus.

Mission Statement

The St Joseph's Catholic College community empowers young women who are shaped by their relationship with Jesus Christ within the Catholic tradition and inspired by St Mary of the Cross MacKillop to make a difference in the world.

Our Young Women:

- develop relationships founded on discipleship and the Gospel
- strive for personal excellence and purpose
- develop their unique gifts and talents
- value learning and reflection that provide a foundation for individual growth and wellbeing
- act with courage, strength and gentleness in the service of others and in the stewardship of our earth
- value education as the foundation for achieving change in the world
- lead with compassion, serve with respect, pray with hope and act justly



Our Values

> Compassion > Hope > Justice > Respect

Table of Contents



STAFF DIRECTORY	4
LINES OF COMMUNICATION 2023/24	5
ASSESSMENT POLICY & PROCEDURES	6
ASSESSMENT PROGRAMS	16
ANCIENT HISTORY	18
BIOLOGY	19
BUSINESS SERVICES	20
BUSINESS STUDIES	21
CHEMISTRY	22
COMMUNITY AND FAMILY STUDIES	23
DRAMA	24
EARTH AND ENVIRONMENTAL SCIENCE	25
ECONOMICS	26
ENGINEERING STUDIES (St Edward's)	27
ENGLISH ADVANCED	28
ENGLISH EXTENSION 1	29
ENGLISH EXTENSION 2	30
ENGLISH STANDARD	31
ENGLISH STUDIES	32
EXPLORING EARLY CHILDHOOD	33
FOOD TECHNOLOGY	34
GEOGRAPHY	35
HISTORY EXTENSION	36
HOSPITALITY (VET CURRICULUM FRAMEWORK)	37
INDUSTRIAL TECHNOLOGY MULTIMEDIA (St Edward's)	38
INDUSTRIAL TECHNOLOGY TIMBER	39
INVESTIGATING SCIENCE	40
JAPANESE BEGINNERS	41
JAPANESE CONTINUERS	42
LEGAL STUDIES	43
MATHEMATICS ADVANCED	44
MATHEMATICS EXTENSION 1	45
MATHEMATICS EXTENSION 2 (St Edward's)	46
MATHEMATICS STANDARD 1	47
MATHEMATICS STANDARD 2	48
MODERN HISTORY	49
MUSIC 1	50
PERSONAL DEVELOPMENT, HEALTH & PHYSICAL EDUCATION	51
PHYSICS	52
RETAIL SERVICES	53
SCIENCE EXTENSION	54
SOCIETY & CULTURE	55
STUDIES IN CATHOLIC THOUGHT	56
STUDIES OF RELIGION I	57
STUDIES OF RELIGION II	58
TEXTILES AND DESIGN	59
VISUAL ARTS	60
ASSESSMENT HANDBOOK ACKNOWLEDGEMENT	61
HSC ASSESSMENT TASK DISTRIBUTION GRID	62

Staff Directory



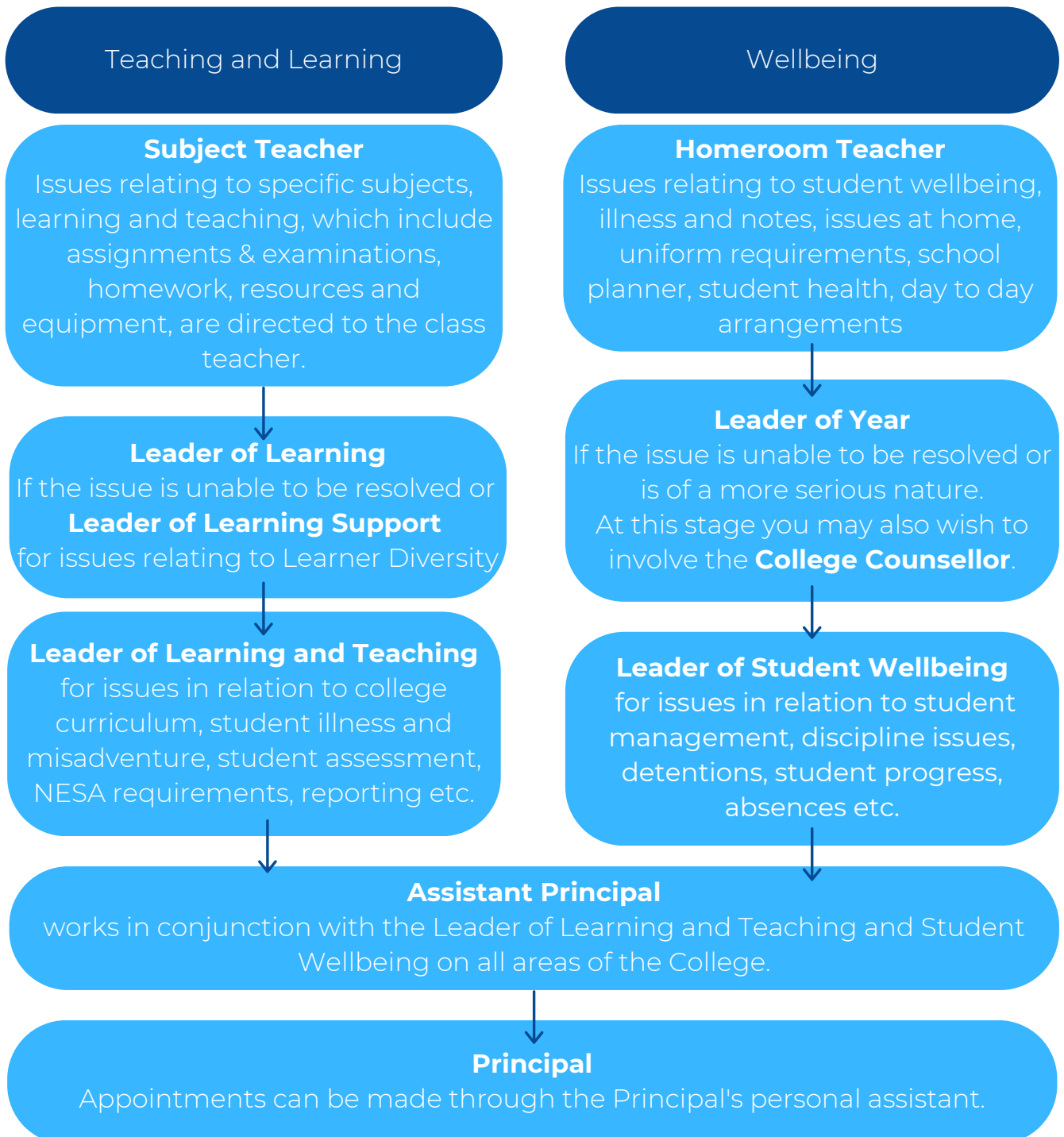
COLLEGE LEADERSHIP TEAM	
Principal	Mr Tony McCudden
Assistant Principal	Mrs Anne Lovett
Leader of Religious Education	Ms Nicole Harrison
Leader of Student Wellbeing	Mrs Cathy Toby
Leader of Learning and Teaching	Mrs Alexandra McArdle
Leader of Administration	Mr Kirk Mercer
Business Manager	Ms Nicole Murphy
MANAGEMENT SYSTEMS	
Leader of Management Systems	Mrs Michelle D'Offay
COLLEGE MINISTRY	
Youth Minister and Leader of Mission	Mrs Phillipa Mercer
YEAR LEADER	
Year 12 2024	Mr Terry Gahan
LEADERS OF LEARNING	
Religious Education	Ms Nicole Harrison
English	Ms Maria Woodhouse
HSIE (Human Society & Its Environment)	Mrs Kristie Kelaher
Mathematics	Mr Tim Woodbine
PDHPE	Mrs Janelle Bartholomew
Science	Mrs Amanda Eades
TAS (Technological & Applied Studies)	Mr Kane Charles
Creative and Performing Arts	Mrs Sue Lockwood
Language	Mrs Samantha Andersen
Learning Support	Mrs Tracy Simpson
Vocational Education & Training (VET) and TAFE	Mrs Rachael Grassi
SPECIAL RESOURCE TEACHERS	
School Counsellors	Mrs Dale Bowmer and Mrs Caroline Zavolokin
Librarian	Mrs Karen Powers
Careers Advisor	Mrs Rachael Grassi
Representative Sports Coordinator	Mrs Debra Northey
Disability Provisions – teacher in charge	Mrs Tracy Simpson
NSW School of Languages supervisor	Mrs Samantha Andersen

Lines of Communication



This information is provided to you to facilitate communication between home and the college. Most issues at St Joseph's Catholic College can be resolved very quickly if directed to the correct staff member. To assist you and your daughter, the flow chart below details the lines for effective communication within the college.

**Please note that the college office/reception hours are:
8.00am – 4.00pm Monday to Friday**



Assessment Policy and Procedure



St. Joseph's Catholic College assessment policy has been devised in the light of its Mission Statement, following guidelines laid down by NESAs, to be just to students on an individual basis, to the students in each course as a group, and to the teachers who have responsibility for its implementation.

1. Notification of Assessment Tasks

Notification of assessment tasks will be communicated to students in writing at least **two weeks** prior to the due date.

NOTE: It is each student's responsibility to check the details of the assessment task notification.

Approximate timings of tasks are located in this assessment handbook.

Additionally, if a student is absent when the assessment task notification is issued it is her responsibility to obtain the task information from the class teacher on return to school.

There will not be a staggered due date because of student absence.

2. Presenting assessment tasks

It is expected that students must present for the start of the school day when handing in a prepared task, unless illness/misadventure applies.

A student who is absent the day before an assessment task or arrives late to school/class must provide relevant documentation to demonstrate illness or misadventure otherwise the student may be deemed to have gained an advantage by taking extra time to complete the task and receive a zero mark.

2a. Hand in assessment tasks

- Assessment tasks must be submitted on the date and at the time indicated on the assessment notification, and only to the person designated on the notification. If, in exceptional circumstances, it is not possible to submit the task to the person nominated, the student should see the Leader of Learning for the course. If the Leader of Learning is not available, the student should see the Leader of Learning and Teaching. **No tasks will be accepted at student services/reception.**

Students submitting electronically should do so to the designated platform (Teams/Google Classroom/email) by the time allocated on the task notification.

- Computer/technology/printing problems should be safeguarded by students through backing up. These would be used as evidence in genuine cases through the illness/misadventure appeal process. Computer/printer problems alone are not sufficient grounds for an illness/misadventure appeal. Students are encouraged to complete tasks ahead of time so that last minute technical difficulties can be sorted out in a timely fashion.

- The security of the assessment task prior to submission is the responsibility of the student. No consideration can be given for tasks which have allegedly been lost or stolen.

2b. In-class tasks-tests, examinations, speeches and presentations

- It is expected that each student will bring basic equipment to an assessment task, as well as any special apparatus indicated by the class teacher or on the notification specification sheet. Students should not expect to be allowed to borrow equipment.
- Unless other instructions are given, normal examination conditions will apply to all tasks, including mobile phones and smart watches being prohibited from the examination room. Note that written instructions are given to each student prior to the formal examination periods detailing specific procedures and behaviour expectations.
- Where two or more classes exist in the same course an in-class assessment task may be scheduled during different periods throughout the school day. Students are reminded of the malpractice provisions of this policy and must understand that their interests are best protected by silence and not assisting students in a class who may have a similar task to complete later in the day. Common conditions and marking procedures will occur for all students.

Where there is an irregularity with the integrity of an assessment task, or where there is a problem with its administration, a completed task may have its weighting reduced and a replacement task may be added (with sufficient notice and adjusted weighting). In extreme cases a task may be totally discarded and/or a replacement task arranged.

If you are sick on the day of an in-class task/test and you sit for the task no allowance will be made for illness in the marking of that task.

Assessment marks must not be modified to take into account possible effects of illness or domestic situations.

3 Student performance

Students will be given timely and meaningful feedback on their performance. This information may be written and/or oral and given in relation to the marking guidelines and course outcomes to assist students in their learning in that course.

Students will be informed of their cumulative ranking at key points throughout the course. It should be noted that such rankings are interim only. Final assessment marks **WILL NOT** be disclosed to students as per NESA policy. At the conclusion of the HSC examinations students can view their Assessment Rank Order Notice, showing their ranking in each course, via Students Online on the NESA website.

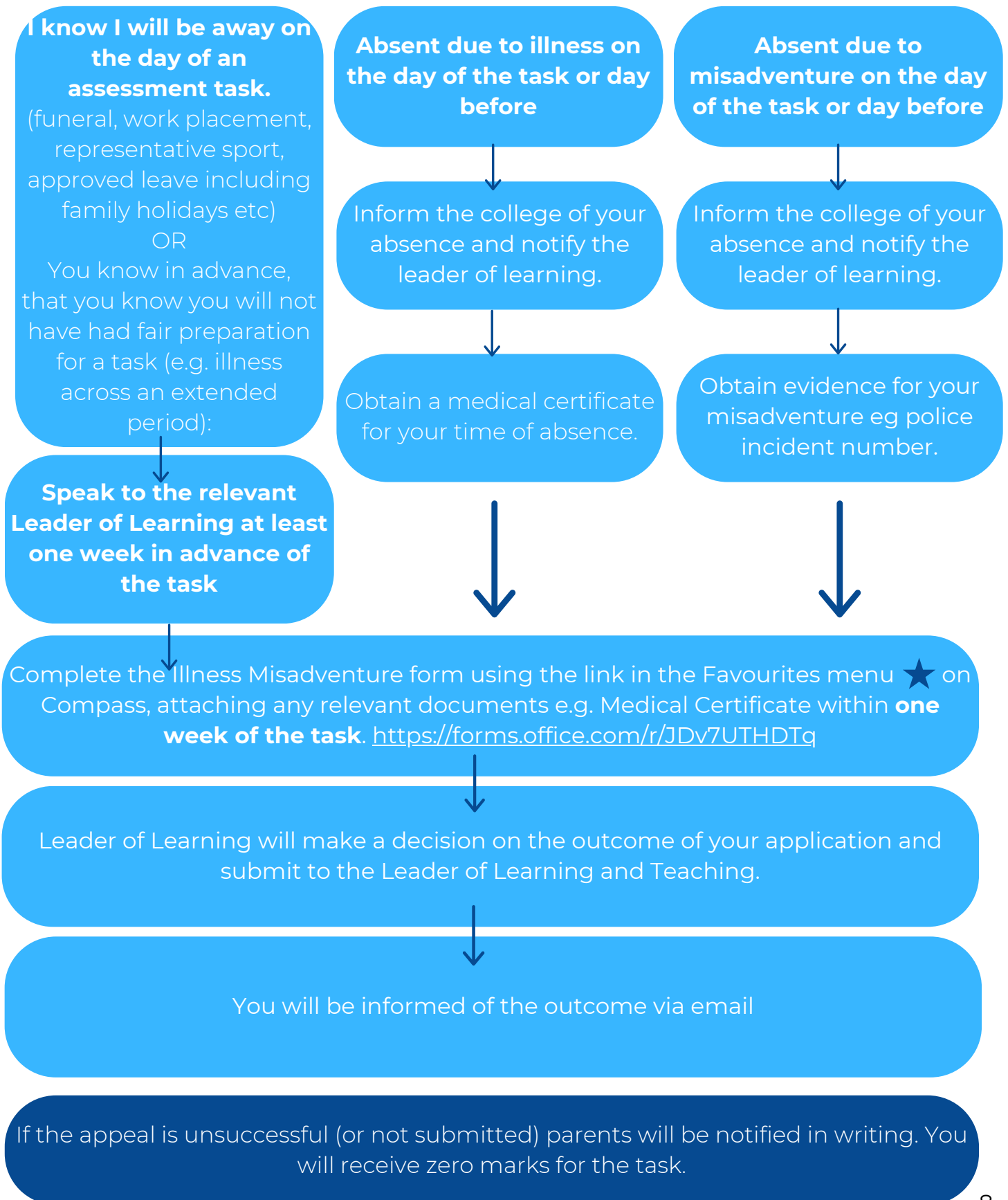
Students wishing to query their result must do so at the time of receipt of feedback for the task. Appeals in this area will not be considered at a later date.

Assessment Policy and Procedure



4. Non-presentation/attendance of an assessment task

A mark of **zero** will be awarded when a student does not submit/attend a task on the due date at the specified time, except in cases where the student lodges an illness/misadventure appeal and it is approved. Use the flow chart below outlining the Illness/Misadventure process.



5. Student responsibilities

schools are instructed not to make allowances for a student's poor performance due to illness or misadventure, students should not attempt an examination or test-style assessment when they are affected by illness or other circumstances. This means the student's actual performance, not potential performance, must be assessed in each task according to the published marking guidelines.

In the case of a task for submission, a student who will be absent for more than one day must arrange for the task to be delivered to the Leader of Learning.

A student returning to school after any absence must see the Leader of Learning immediately upon their return to school to make arrangements for:

- completion of the same task at an alternate time, or
- completion of an alternate task of similar nature, or
- in exceptional circumstances, an estimate of performance as deemed appropriate by the Leader of Learning and the Leader of Learning and Teaching and approved by the college Principal.

A student must be prepared to sit for the assessment task, or an alternate task, on the day of their return to school.

When a student misses a **scheduled examination during a formal examination period** e.g. HSC trials, it is the student's responsibility to contact the Leader of Learning and Teaching as soon as possible to arrange to sit the missed examination at a later date during the examination period where suitable. **Documentation supporting an illness/misadventure appeal is essential and if this appeal is not successfully upheld then a mark of zero applies.**

6. Penalties

Penalties include the award of a **zero mark** which can be awarded in two instances: **non-presentation of/for a task without approved reason or an attempt to gain unfair advantage over other students.**

6a. Non-presentation

If a task is not attended/submitted by the specified time on the due date, and the student is not exempted by receiving approval for the illness/misadventure from the Leader of Learning and Teaching, following the appropriate procedure outlined in **section 4**, the Leader of Learning and Leader of Learning and Teaching will determine that the student be awarded a zero mark for that task. Parents will be notified through an official non-completion of course warning letter (**'N-warning'**). Advice on how to satisfactorily meet course requirements will be outlined in this letter; all 'zero' tasks will need to be completed to meet the course requirements.

6b. Malpractice (cheating or dishonest practices /unfair advantage/plagiarism) and non-serious attempts

All work submitted for assessment must be the student's own: **it cannot be copied from another student, plagiarised from reference material, downloaded from the internet, nor completed by nor in collaboration with another student (unless group work is specified in the task notification), parent, tutor or other. This includes the use of Artificial Intelligence (AI) to compose or improve assessment task submissions.**

Any work suspected of not being original will be subjected to further investigation by an Assessment Panel. If proven to be not original work, a **zero mark** will be awarded. All students involved, whether borrowers or lenders of work, are subject to a zero mark and parents will be notified in writing.

Any attempt to gain an unfair advantage over other students in terms of extra time (e.g. taking time off school the day prior to a task or arriving late at school on the due day), additional knowledge of the nature of a task, non-compliance with stated conditions and examination procedures or such, may result in the awarding of a zero mark with parents being notified. Any student found with a mobile phone, or similar device such as a smart watch, in an examination room will be given a mark of zero.

If a student's assessment task effort is deemed by the class teacher and Leader of Learning to be **non-serious**, the matter will be referred to the Leader of Learning and Teaching. If confirmed, a **zero mark** may be awarded and parents will be notified. Non-serious attempts include the completion of multiple choice questions only in an examination, instances where there is no response to a question(s), extremely short or nonsensical responses and inappropriate comments as part of a response.

Note that if a section of an examination/assessment task is omitted/plagiarised it will be deemed a non-attempt and contribute its weighting to the overall non-completion of percentage of assessment tasks as per NESAs policy. When a student fails to complete assessment tasks totally 50% or more of the final assessment marks, the Principal must certify that the course has not been studied satisfactorily. Students and parents are notified in writing when this rule is in danger of being breached.

6c. Warning to students

If a student is awarded a zero mark for a task and is thus at risk of not meeting the assessment requirements for a course, then

- **a written warning will be posted to the college record of student's address, outlining what needs to be completed, and the date for completion,**
- **a request from the student and her parent(s)/carer(s) for a written acknowledgment is included, and**
- **a copy of the warning notice is placed in the student's file.**

7. Satisfactory progression

A student will be considered to have satisfactorily completed a course if, in the Principal's view, there is sufficient evidence that the student has made a genuine attempt at assessment tasks which contribute in excess of 50 percent of available marks in the course and has:

- (a) followed the course developed or endorsed by the NESAs; and
- (b) applied themselves with diligence and sustained effort to the set tasks and experiences provided in the course by the school; and
- (c) achieved some or all of the course outcomes.

7a. Identification - attendance

The Year Leader will monitor attendance to identify students of concern i.e. students with unexplained absences or lateness, for which no absence note has been provided in the seven days following return to school. Absence from class may result in the non-completion of course requirements. The Year Leader will issue a written warning to parents of students of concern. If absence continues an Assessment Panel will review the student's performance to determine if she is achieving course outcomes and applying herself with due diligence to the set tasks and experiences provided in the course.

Application/achievement/class attendance

The class teacher has the first responsibility to determine whether a student's progress in the course is satisfactory, whether her achievement is at a level consistent with her ability. Factors that might affect this include attendance at lessons – late arrival, unexplained absence, extended absence, unsatisfactory effort in completing formal and informal set tasks, inappropriate and inattentive classroom behaviour.

Progress sheets will be issued to class teachers for them to make comment on student performance. The sheets will request information on students for whom the teacher has documentation (e.g. dates of missed tasks, detention forms, diary entries) showing them to be at risk.

A student may not have satisfactorily achieved course outcomes if there is sufficient evidence of failure to fulfil course completion criteria or failure to make a genuine attempt at assessment tasks.

7b. Notification

The Leader of Learning will issue a warning letter on behalf of the Principal to students with identified unsatisfactory progression. Warning letters outline the precise concerns and ways that the student can remedy the situation. These letters assist the Principal in determining whether a student has satisfactorily completed a course. An interview involving the Leader of Learning and class teacher(s) concerned would normally follow the letters being sent.

7c. Consequences

Where sufficient opportunity has been provided and the student has not complied with the course requirements, an 'N' (unsatisfactory) determination will be applied. The Principal will:

- issue a letter to parents;
- inform students of their right to appeal and the procedure for such;
- submit the 'N' determination to NESAs.

Where an N-determination is applied:

- in a 1 or 2 unit course, that course will not contribute to the required pattern of study;
- in the common component of related courses (e.g. Mathematics Advanced for a student enrolled in Extension 1), that course and the related additional course will not contribute in that year to the required pattern of study;
- in the Extension 2 additional course, that course only will not contribute in that year.

8. Student reviews/appeals

Students have the right to seek a review of the administration of their assessment mark. A student considering a review request should see the Leader of learning and Teaching, who will inform her of the exact procedure to be followed.

The assessment review will be conducted by a panel consisting of the Principal, the Leader of Learning and Teaching, the Leader of Learning and class teacher. In conducting a review, NESAs requires the panel to determine whether:

- a) the weightings specified by the school in its assessment program conform with the NESAs requirements as detailed in the syllabus packages.
- b) the procedures used by the school for determining the final assessment mark conform with its stated assessment program – in particular, the weightings used for the various assessment tasks should be consistent with those specified in the assessment program.
- c) there are no computational or other clerical errors in the determination of the assessment.

Provided that the panel is satisfied that these conditions have been met, no change will be made to the assessment mark. If a student is dissatisfied with the result of the review, she may appeal to the NESAs (check NESAs website for closing date). The only grounds for such appeals will be to judge whether the procedures followed by the school complied with NESAs policy and whether the school review was conducted appropriately.

9. Student transfers

For Year 12 students who transfer to St Joseph's Catholic College prior to the end of Term 2, assessment marks are prepared based on those tasks that have been completed since the time of arrival at the college. For these students, each task is worth more than the stated amount taking into account the value of the component(s) missed.

10. Disability provisions

Students seeking disability provisions (e.g. extra time, reader, writer, enlarged print, separate supervision) need to have their requests registered with the Leader of Learning and Teaching, who will liaise with the teacher-in-charge of disability provisions (Mrs Simpson) generally before the commencement of the first assessment task of the HSC program.

Once formal notification of disability provisions has been received from NESAs, the student is entitled to these for each assessment task of her program of study. It is the responsibility of the student to arrange with the Leader of Learning and the teacher-in-charge of disability provisions, well in advance of an assessment task for these disability provisions to be made.

In the following courses students are required to complete a practical component as part of the Higher School Certificate examination: Drama; English Extension 2; Extension Science; Industrial Technology (Timber and Multimedia); Music 1; Society and Culture; and Visual Arts.

Important WH&S considerations regarding major works

In relation to issues of health and safety, the development and selection of student projects, major works, exhibitions and performances should:

- recognise and reflect relevant State and National legislation, regulations and standards including those relating to occupational health and safety, animal welfare, dangerous goods, hazardous substances and weapons.

For further details regarding exclusions – refer to NESA ACE website - <http://ace.bos.nsw.edu.au/ace-9016> . NB: Any HSC project that might be considered dangerous to health or safety may not be marked.

Students should discuss with their class teacher the suitability of their major work and if unsure of the suitability of all or any part of their major work should consult their teacher immediately.

Before commencement

Students are not permitted to commence the major work until students have:

- received a written copy of the course specific guidelines for the project component (as outlined syllabus documents)
- been informed of the WH&S guidelines regarding major works
- read the NESA 2023 Higher School Certificate Rules and Procedures
- submitted the Practical Project Record of Progress proforma to the class teacher containing an outline of the major work
- received consent for the project to commence from the classroom teacher

During development

During the development phase for the major works, teachers will regularly monitor and assess the student's progress. Students will need to ensure that process diaries, logbooks, body of work, journals are kept up to date. Students will also be informed about the requirements regarding outside assistance including that they discuss any proposed outside assistance with the class teacher before it is undertaken, and that outside assistance must be correctly and accurately acknowledged in the major work documentation.

Certification of Major Works



Submission and certification

The submission dates for completion and submission to school for major work projects are determined by NESAs and are published on the NESAs website.

Students will need to complete a declaration for the submitted works on which the student must certify that the submitted item or performance is their own work and that they have not worked on it after the published due time and date. The class teacher and Principal are both required to certify that the major work or performance was developed under the teacher's supervision, was the student's own work and was completed by the due date.

If either the teacher or the principal is unable to certify any major work or performance, a non-certification report form is to be forwarded (with the major work) to NESAs. The NESAs will make final determinations on all cases of non-certification and advise both the school and the student at the time of the release of HSC results.

Each course offered at St Joseph's Catholic College has its own assessment schedule which meets NESA' requirements and accords with the college policy contained within this booklet. As the objectives set out in the NESA syllabi vary from course to course, so too, will the nature and number of assessment tasks.

The following pages set out in overview the assessment programs and schedules for individual courses.

Board endorsed courses

All assessment policies and procedures outlined in this handbook apply to the Board endorsed courses offered within the college.

The assessment policies for TAFE courses are determined, published and administered by the individual colleges of TAFE.

Vocational education courses (VET), the industry frameworks

Hospitality, Business Services and Retail Services courses have ongoing assessment carried out within both the classroom and the workplace. A record of student achievement is maintained in a student Log that is signed by the teacher or workplace assessor. A HSC assessment mark is not provided in the same mode as board developed and other board endorsed courses.

Pathways students

Accumulating and accelerating students are subject to all procedures outlined in this policy statement. Special arrangements will be made for students in consultation between the student, Leader of Learning, Leader of Learning and Teaching, and Assistant Principal.

Scheduling assessment tasks

Every attempt has been made to provide an even spread of assessment tasks across the available weeks of the school year. The special requirements of some programs, however, mean that there will be unavoidable peak times for assessments. Please refer to the HSC Assessment Task Distribution grid which outlines the weeks and terms for each subjects' assessments.

The need for an 'assessment free' week prior to trial examination periods has been recognised and tasks are not scheduled at such times. Exceptions occur when the scheduling of the task at an earlier time would in fact increase the pressure of work on the students concerned.

October 2023

YEAR 12

ASSESSMENT

SCHEDULES

2023 – 2024

Category key:

BDC – Board Developed Course (BDCs are examined at the HSC)

CEC – Content Endorsed Course (CECs are not examined at the HSC)

ANCIENT HISTORY

Course: HSC
Category: BDC
Assessment period: 2023-2024

OUTCOMES

Code	Descriptor
	A student:
AH12-1	accounts for the nature of continuity and change in the ancient world
AH12-2	proposes arguments about the varying causes and effects of events and developments
AH12-3	evaluates the role of historical features, individuals and groups in shaping the past
AH12-4	analyses the different perspectives of individuals and groups in their historical context
AH12-5	assesses the significance of historical features, people, places, events and developments of the ancient world
AH12-6	analyses and interprets different types of sources for evidence to support an historical account or argument
AH12-7	discusses and evaluates differing interpretations and representations of the past
AH12-8	plans and conducts historical investigations and presents reasoned conclusions, using relevant evidence from a range of sources
AH12-9	communicates historical understanding, using historical knowledge, concepts and terms, in appropriate and well-structured forms
AH12-10	analyses issues relating to the ownership, custodianship and conservation of the ancient past

COMPONENT

WEIGHTINGS

A	Knowledge and understanding of course content	40
B	Historical skills in the analysis and evaluation of sources and interpretations	20
C	Historical inquiry and research	20
D	Communication of historical understanding in appropriate forms	20

ASSESSMENT TASK

- Times are approximate. Exact dates will be confirmed with a minimum of two weeks' notice.

Term/ Week	Outcomes	Task	Component				Weight	
			A	B	C	D	SEM 1	HSC
T4/W8	AH12-4, AH12-6, AH12-7, AH12-9, AH12-10	Core topic: Cities of Vesuvius Source analysis A	5	10		5	50	20
T1/W4	AH12-4, AH12-6, AH12-7, AH12-9, AH12-10	Core topic: Cities of Vesuvius Source analysis B	5	10		5	50	20
							100	
T2/W6	AH12-1, AH12-2, AH12-3, AH12-5, AH12-6, AH12-8, AH12-9	Historical periods: extended response				20	10	30
T3/W3-4	AH12-1, AH12-2, AH12-3, AH12-4, AH12-5, AH12-6, AH12-7, AH12-9	Trial HSC examination	30					30
		TOTAL	40	20	20	20		100

BIOLOGY

Course: HSC
Category: BDC
Assessment period: 2023-2024

OUTCOMES

Code	Descriptor
	A student:
BIO11/12-1	develops and evaluates questions and hypotheses for scientific investigation
BIO11/12-2	designs and evaluates investigations in order to obtain primary and secondary data and information
BIO11/12-3	conducts investigations to collect valid and reliable primary and secondary data and information
BIO11/12-4	selects and processes appropriate qualitative and quantitative data and information using a range of appropriate media
BIO11/12-5	analyses and evaluates primary and secondary data and information
BIO11/12-6	solves scientific problems using primary and secondary data, critical thinking skills and scientific processes
BIO11/12-7	communicates scientific understanding using suitable language and terminology for a specific audience or purpose
BIO12-12	Explains the structures of DNA and analyses the mechanisms of inheritance and how processes of reproduction ensure continuity of species
BIO12-13	Explains natural genetic change and the use of genetic technologies to induce genetic change
BIO12-14	Analyses infectious disease in terms of cause, transmission, management and the organism's response, including the human immune system
BIO12-15	Explains non-infectious disease and disorders and a range of technologies and methods used to assist, control, prevent and treat non-infectious disease.

COMPONENTS		WEIGHTINGS
A	Knowledge and understanding of course content	40
B	Working Scientifically	60

ASSESSMENT TASKS

Term/ Week	Outcomes	Task	Component		Weight	
			A	B	Sem 1	HSC
T4 /W10	Bio12-2, Bio12-3, Bio12-5, Bio12-7, Bio12-12	Heredity Skills Task (Core 1)	5	15	40	20
T2/W1	Bio12-1, Bio12-2, Bio12-3, Bio12-4, Bio12-5, Bio12-6, Bio12-7, Bio12-12, Bio12-13, Bio12-14	Depth Study	10	20	60 100%	30
T2/W10	Bio12-2, Bio12-3, Bio12-5, Bio12-7, Bio12-13	Research and Presentation Task	5	15		20
T3/W3-4	Bio12-1, Bio12-2, Bio12-3, Bio12-4, Bio12-5, Bio12-6, Bio12-7, Bio12-12, Bio12-13, Bio12-14, Bio12-15	Trial HSC examination	20	10		30
		TOTAL	40	60		100

BUSINESS SERVICES VET CURRICULUM FRAMEWORK

Course: HSC
Category: Board Developed Course (BDC)
Assessment period: 2023-2024

Unit code	Unit of competency	HSC hours
BSBWHS311	Assist with maintaining workplace safety	20
BSBPEF201	Support personal wellbeing in the workplace	10
BSBTEC201	Use business software applications	15
BSBWRT311	Write simple documents	20
BSBTEC301	Design and produce business documents	25
BSBOPS304	Deliver and monitor a service to customers	20
BSBTEC302	Design and produce spreadsheets	20
BSBTEC303	Create electronic presentations	15
BSBTEC202	Use digital technologies to communicate in the workplace	10
BSBSUS211	Participate in sustainable work practices	15
BSBCRT311	Apply critical thinking skills in a team environment	20
BSBPEF301	Organise personal work priorities	20
BSBXC301	Engage in workplace communication	15
BSBTWK301	Use inclusive workplace practices	15
HLTAID003	Provide First Aid (RPL)	20

Units in bold indicate HSC examinable units. Compulsory 70 hours work placement (over the 2 years)

- Times are approximate. Exact dates will be confirmed with a minimum of two weeks' notice.
- This is a competency-based course and examinations are used for HSC *estimates* only. Other units are assessed via Class Assessment Events at the completion of the unit.
- The ***HSC examines the two-year course.*** (see HSC examinable units in bold above)
- On successful completion of all units and work placement, students gain Certificate III in Business BSB30120

Term/Week	Unit of competency	Task Description	Weighting
Term 2 Week 8 2023	BSBWHS311, BSBPEF201, BSBTEC201, BSBWRT311, BSBTEC301	Event 1 Business Start-up	N/A
Term 3 Week 8 2023	BSBOPS304, BSBTEC302	Event 2 Spreadsheets and Customers	N/A
Term 3 Week 4 OR 5	Compulsory 35 hours of work placement	Work placement 1	N/A
Term 3 Week 9-10 2023	BSBWHS311, BSBPEF201, BSBTEC201	Preliminary Course Examination	N/A
Term 4 Week 10 11/12/2023	BSBTEC303, BSBTEC202	Event 3	N/A
Term 1 2024 Week – TBA	Compulsory 35 hours of work placement	Work placement 2	N/A
Term 1 2024 Week – 10	BSBSUS211, BSBCRT311	Event 4	N/A
Term 3 2024 Week – 2	BSBPEF301, BSBXC301, BSBTWK301	Event 5	N/A
Term 3 2024 Week 3-5	BSBWHS311, BSBPEF201, BSBTEC201, BSBSUS211, BSBCRT311, BSBPEF301, BSBXC301, BSBTWK301	Trial HSC Examination	100
		TOTAL	100

BUSINESS STUDIES

Course: HSC
Category: BDC
Assessment period: 2023-24

OUTCOMES

Code	Descriptor
	A student:
H1	critically analyses the role of business in Australia and globally
H2	evaluates management strategies in response to changes in internal and external influences
H3	discusses the social and ethical responsibilities of management
H4	analyses business functions and processes in large and global businesses
H5	explains management strategies and their impact on businesses
H6	evaluates the effectiveness of management in the performance of businesses
H7	plans and conducts investigations into contemporary business issues
H8	organises and evaluates information for actual and hypothetical business situations
H9	communicates business information, issues and concepts in appropriate formats
H10	applies mathematical concepts appropriately in business situations

COMPONENTS

WEIGHTINGS

A	Knowledge and understanding of course content	40
B	Stimulus-based skills	20
C	Inquiry and research	20
D	Communication of business information, ideas and issues in appropriate forms	20

ASSESSMENT TASKS

- Times are approximate. Exact dates will be confirmed with a minimum of two weeks' notice.

Term/ Week	Outcomes	Task	Component				Weight	
			A	B	C	D	Sem 1	HSC
T4/W9	H4, H5, H7, H9	Operations: Short answer and multiple choice responses	10		10		45	20
T1/W8	H4, H7, H8, H9	Marketing: Extended response	5	10	5	5	55	25
							100	
T2/W9	H6, H8, H9, H10	Finance: In class report and topic test	10	5	5	5		25
T3/W3-4	H1, H2, H3, H4, H5, H10	Trial HSC examination	15	5		10		30
		TOTAL	40	20	20	20		100

CHEMISTRY

Course: HSC
Category: BDC
Assessment period: 2023-2024

OUTCOMES

Code	Descriptor
	A student:
CH11/12-1	develops and evaluates questions and hypotheses for scientific investigation
CH11/12-2	designs and evaluates investigations in order to obtain primary and secondary data and information
CH11/12-3	conducts investigations to collect valid and reliable primary and secondary data and information
CH11/12-4	selects and processes appropriate qualitative and quantitative data and information using a range of appropriate media
CH11/12-5	analyses and evaluates primary and secondary data and information
CH11/12-6	solves scientific problems using primary and secondary data, critical thinking skills and scientific processes
CH11/12-7	communicates scientific understanding using suitable language and terminology for a specific audience or purpose
CH12-12	Explains the characteristics of equilibrium systems, and the factors that affect these systems
CH12-13	Describes, explains and quantitatively analyses acids and bases using contemporary models
CH12-14	Analyses the structure of, and predicts reactions involving carbon compounds
CH12-15	Describes and evaluates chemical systems used to design and analyse chemical processes

COMPONENTS	WEIGHTINGS
A Knowledge and understanding of course content	40
B Working Scientifically	60

ASSESSMENT TASKS

* Times are approximate. Exact dates will be confirmed with a minimum of two weeks' notice.

Term/ Week	Outcomes	Task	Component		Weight	
			A	B	Sem 1	HSC
T4 /W10	CH11/12-1, CH11/12-4, CH11/12-5, CH11/12-6, CH11/12-7, CH-12 CH-13	Data Analysis - Working Scientifically	5	15	40	20
T1/W8	CH11/12-1, CH11/12-2, CH11/12-3, CH11/12-4, CH11/12-5, CH11/12-7, CH12-12, CH12-13, CH12-14	Depth Study	10	20	60 100%	30
T2/W8	CH11/12-2, CH11/12-3, CH11/12-5, CH12-13, CH12-14	Research and Practical Task	5	15		20
T3/ W3-4	CH11/12-1, CH11/12-2, CH11/12-3, CH11/12-4, CH11/12-5, CH11/12-6, CH11/12-7, CH12-12, CH12-13, CH12-14, CH12-15	Trial HSC examination	20	10		30
		TTOTAL	40	60		100

COMMUNITY AND FAMILY STUDIES

Course: HSC
Category: BDC
Assessment period: 2023 – 2024

OUTCOMES

Code	Descriptor
	A student :
H1.1	analyses the effect of resource management on the wellbeing of individuals, groups, families and communities
H2.1	analyses different approaches to parenting and caring relationships
H2.2	evaluates strategies to contribute to positive relationships and the wellbeing of individuals, groups, families and communities
H2.3	critically examines how individual rights and responsibilities in various environments contribute to wellbeing
H3.1	analyses the socio-cultural factors that lead to special needs of individuals in groups
H3.2	evaluates networks available to individuals, groups and families within communities
H3.3	critically analyses the role of policy and community structures in supporting diversity
H3.4	critically evaluates the impact of social, legal and technological change on individuals, groups, families and communities
H4.1	justifies and applies appropriate research methodologies
H4.2	communicates ideas, debates issues and justifies opinions
H5.1	proposes management strategies to enable individuals and groups to satisfy their specific needs and to ensure equitable access to resources
H5.2	develops strategies for managing multiple roles and demands of family, work and other environments
H6.1	analyses how empowering women & men influences the way they function in society
H6.2	formulates strategic plans that preserve rights, promote responsibilities and establish roles leading to the creation of positive social environments

COMPONENTS

WEIGHTINGS

A	Knowledge & understanding of course content	40
B	Skills in critical thinking, research methodology, analysing and communicating	60

ASSESSMENT TASKS

* Times are approximate. Exact dates will be confirmed with a minimum of two weeks' notice.

Term/ Week	Outcomes	Task	Component		Weight	
			A	B	Sem 1	HSC
T4/W9	H4.1, H4.2	Independent Research Project	5	15	45	20
T1/W9	H2.1, H2.2, H2.3, H5.1, H5.2	Research and Analysis task	10	15	55	25
					100	
T3/W1	H3.4, H4.2	Written report Presentation	10	15	25	25
T3/W3-4	H1.1, H3.1, H3.2, H3.3, H6.1, H6.2	Trial HSC examination	15	15		30
		TOTAL	40	60		100

DRAMA

Course: HSC
Category: BDC
Assessment period: 2023– 2024

OUTCOMES

Code	Descriptor
	A student:
H1.1	uses acting skills to adopt and sustain a variety of characters and roles
H1.2	uses performance skills to interpret and perform scripted and other material
H1.3	uses knowledge and experience of dramatic and theatrical forms, styles and theories to inform and enhance individual and group devised works
H1.4	collaborates effectively to produce a group-devised performance
H1.5	demonstrates directorial skills
H1.6	records refined group performance work in appropriate form
H1.7	demonstrates skills in using the elements of production
H2.1	demonstrates effective performance skills
H2.2	uses dramatic and theatrical elements effectively to engage and audience
H2.3	demonstrates directorial skills for theatre and other media
H3.1	critically applies understanding of the cultural, historical and political contexts that have influenced specific drama and theatre practitioners, styles and movements
H3.2	analyses, synthesises and organises knowledge, information and opinion in coherent, informed oral and written responses
H3.3	demonstrates understanding of the actor-audience relationship in various dramatic and theatrical styles and movements

COMPONENTS

WEIGHTINGS

A	Making	40
B	Performing	30
C	Critically studying	30

ASSESSMENT TASKS

* Times are approximate. Exact dates will be confirmed with a minimum of two weeks' notice.

Term/ Week	Outcomes	Task	Component			Weight	
			A	B	C	Sem 1	HSC
T4/W9	H1.3, H1.6, H3.1, H3.2, H3.3	Directorial Presentation/Essay Australian Drama & Theatre	10		10	50	20
T1/W10	H1.1, H1.2, H1.3, *	Individual Project Progress/Logbook	10		10	50	20
		(Verbatim Theatre Essay AFL)				100	
T2/W10	H1.1, H1.2, H1.4, H1.5, H2.2	Group Performance Work in progress/Logbook	10	20			30
T3/W3-4	H1.1, H1.2, H1.4, H1.6, H2.3, H3.3, H3.2 *	Trial HSC examination: Written Exam Group performance Individual Project/Logbook	10	10	10		30
		TOTAL	40	30	30		100

*Teacher will select the appropriate outcomes based on the Individual Project option selected by each student.

EARTH AND ENVIRONMENTAL SCIENCE

Course: HSC
Category: BDC
Assessment period: 2023-2024

OUTCOMES

Code	Descriptor
EES11/12-1	<i>A student:</i> develops and evaluates questions and hypotheses for scientific investigation
EES11/12-2	designs and evaluates investigations in order to obtain primary and secondary data and information
EES11/12-3	conducts investigations to collect valid and reliable primary and secondary data and information
EES11/12-4	selects and processes appropriate qualitative and quantitative data and information using a range of appropriate media
EES11/12-5	analyses and evaluates primary and secondary data and information
EES11/12-6	solves scientific problems using primary and secondary data, critical thinking skills and scientific processes
EES11/12-7	communicates scientific understanding using suitable language and terminology for a specific audience or purpose
EES12-12	describes and evaluates the models that show the structure and development of the Earth over its history
EES12-13	describes and evaluates the causes of the Earth's hazards and the ways in which they affect, and are affected by, the Earth's systems
EES12-14	analyses the natural processes and human influences on the Earth, including the scientific evidence for changes in climate
EES12-15	describes and assesses renewable and non-renewable Earth resources and how their extraction, use, consumption and disposal affect the Earth's systems

COMPONENTS		WEIGHTINGS
A	Knowledge and understanding of course content	40
B	Working Scientifically	60

ASSESSMENT TASKS

* Times are approximate. Exact dates will be confirmed with a minimum of two weeks' notice.

Term/ Week	Outcomes	Task	Component		Weight	
			A	B	Sem 1	HSC
T4 /W10	EES11/12-1, EES11/12-4, EES11/12-5, EES11/12-6, EES11/12-7, EES12-12	Research Task and Working Scientifically Skills	5	15	40	20
T1/W8	EES11/12-1, EES11/12-2, EES11/12-3, EES11/12-4, EES11/12-5, EES11/12-7, EES12-12, EES12-13, EES12-14, EES12-15	Depth Study	10	20	60 100%	30
T2/W9	EES11/12-1, EES11/12-2, EES11/12-3, EES11/12-4, EES11/12-5, EES11/12-6, EES11/12-7, EES12-15	Research and Practical Task	5	15		20
T3/ W3-4	EES11/12-1, EES11/12-2, EES11/12-3, EES11/12-4, EES11/12-5, EES11/12-6, EES11/12-7, EES12-12, EES12-13, EES12-14, EES12-15	Trial HSC examination	20	10		30
		TTOTAL	40	60		100

ECONOMICS

Course: HSC
Category: BDC
Assessment period: 2023-2024

OUTCOMES

Code	Descriptor
	<i>A student:</i>
H1	demonstrates understanding of economic terms, concepts and relationships
H2	analyses the economic role of individuals, firms, institutions and governments
H3	explains the role of markets within the global economy
H4	analyses the impact of global markets on the Australian and global economies
H5	discusses policy options for dealing with problems and issues in contemporary and hypothetical contexts
H6	analyses the impact of economic policies in theoretical and contemporary Australian contexts
H7	evaluates the consequences of contemporary economic problems and issues on individuals, firms and governments
H8	applies appropriate terminology, concepts and theories in contemporary and hypothetical economic contexts
H9	selects and organises information from a variety of sources for relevance and reliability
H10	communicates economic information, ideas and issues in appropriate forms
H11	applies mathematical concepts in economic contexts
H12	works independently and in groups to achieve appropriate goals in set timelines

COMPONENTS

WEIGHTINGS

A	Knowledge and understanding of course content	40
B	Stimulus-based skills	20
C	Inquiry and research	20
D	Communication of economic information, ideas & issues in appropriate forms	20

ASSESSMENT TASKS

- Times are approximate. Exact dates will be confirmed with a minimum of two weeks' notice

Term/ Week	Outcomes	Task	Component				Weight	
			A	B	C	D	Sem 1	HSC
T1/W2	H1, H2, H3, H4, H5	In-class Topic Test: The Global Economy	5	10	5		40	20
T2/W2	H6, H7, H8, H9, H10	Research task with in-class written component: Australia's Place in the Global Economy	10	5	10	5	60	30
							100	
T2/W9	H7, H9, H10, H11, H12	Media analysis with in-class component: Economic issues	10		5	5		20
T3/W3-4	H1, H2, H5, H6, H7	Trial HSC examination Topics 1, 2, 3 and 4	15	5		10		30
		TOTAL	40	20	20	20		100

ENGINEERING STUDIES - Delivered at St Edward's

Course: HSC
Category: BDC
Assessment period: 2023 - 2024

OUTCOMES

Code	Descriptor
	A student:
H1.1	describes the scope of engineering and critically analyses current innovations
H1.2	differentiates between the properties and structure of materials and justifies the selection of materials in engineering applications
H2.1	determines suitable properties, uses and applications of materials, components and processes in engineering
H2.2	analyses and synthesises engineering applications in specific fields and reports on the importance of these to society
H3.1	demonstrates proficiency in the use of mathematical, scientific and graphical methods to analyse and solve problems of engineering practice
H3.2	uses appropriate written, oral and presentation skills in the preparation of detailed engineering reports
H3.3	develops and uses specialised techniques in the application of graphics as a communication tool
H4.1	investigates the extent of technological change in engineering
H4.2	applies knowledge of history and technological change to engineering-based problems
H4.3	applies understanding of social, environmental and cultural implications of technological change in engineering to the analysis of specific engineering problems
H5.1	works individually and in teams to solve specific engineering problems and prepare engineering reports
H5.2	selects and uses appropriate management and planning skills related to engineering
H6.1	demonstrates skills in research and problem-solving related to engineering
H6.2	demonstrates skills in analysis, synthesis and experimentation related to engineering

COMPONENTS

WEIGHTINGS

A	Knowledge and understanding of course content	60
B	Knowledge and skills in research, problem solving and communication related to engineering practice	40

ASSESSMENT TASKS

* Times are approximate. Exact dates will be confirmed with a minimum of two weeks' notice.

Term/ Week	Outcomes	Task	Component		Weight	
			A	B	Sem 1	HSC
T4/W7	H 1.2, H 2.1, H 3.2, H 3.3, H 4.1, H4.3, H 5.1, H 6.1, H 6.2	Truss Design Report	20	10	60	30
T1/W6	H 1.2, H 2.1, H 3.2, H 4.1, H 4.3, H5.1, H6.1	Engineer's Report and Mechanics Test	10	10	40 100	20
T2/W5	H 1.2, H 2.2, H 3.2, H 4.1, H4.3	Aeronautics Engineers Report and Mechanics Test	10	10		20
T3/W3-4	H1.1, H 1.2, H 2.1, H3.1, H 3.2, H 3.3, H 4.1, H4.2, H4.3, H 5.1, H 6.1, H 6.2	Trial HSC examination	20	10		30
		TOTAL	60	40		100

ENGLISH ADVANCED

Course: HSC
Category: BDC
Assessment period: 2023 - 2024

OUTCOMES

Code	Descriptor
	A student:
EA 12-1	independently responds to, composes and evaluates a range of complex texts for understanding, interpretation, critical analysis, imaginative expression and pleasure
EA 12-2	uses, evaluates and justifies processes, skills and knowledge required to effectively respond to and compose texts in different modes, media and technologies
EA 12-3	critically analyses and uses language forms, features and structures of texts justifying appropriateness for specific purposes, audiences and contexts and evaluates their effects on meaning
EA 12-4	strategically adapts and applies knowledge, skills and understanding of language concepts and literary devices in new and different contexts
EA 12-5	thinks imaginatively, creatively, interpretively, critically and discerningly to respond to, evaluate and compose texts that synthesise complex information, ideas and arguments
EA 12-6	investigates and evaluates the relationships between texts
EA 12-7	evaluates the diverse ways texts can represent personal and public worlds and recognises how they are valued
EA 12-8	explains and evaluates nuanced cultural assumptions and values in texts and their effects on meaning
EA 12-9	reflects on, evaluates and monitors own learning and refines individual and collaborative processes as an independent learner

COMPONENTS

WEIGHTINGS

A	Knowledge and understanding of course content	50
B	Skills in responding to texts and communication of ideas appropriate to audience, purpose and context across all modes	50

ASSESSMENT TASKS

* Times are approximate. Exact dates will be confirmed with a minimum of two weeks notice.

Term/ Week	Outcomes	Task	Component		Weight	
			A	B	Sem 1	HSC
T4/W9	EA12-1, EA12-3, EA12-5, EA12-6, EA12-7	Texts and Human Experience: <i>The Crucible</i> Multi-modal presentation	15	10	100	25
T2/W1	EA12-1, EA12-3, EA12-5, EA12-6, EA12-8	Module A: Textual Conversations – <i>Hag-seed/The Tempest</i> Extended response	15	15	100	30
T2/W10	EA12-2, EA12-3, EA12-4, EA12-5, EA12-7, EA12-9	Module C: Craft of Writing Imaginative response and reflection	5	15		20
T3/W3-4	EA12-3, EA12-4, EA12-5, EA12-6, EA12-8	Trial HSC examination (Common module, Module A, Module B, Module C)	15	10		25
TOTAL			50	50		100

ENGLISH EXTENSION 1

Course: HSC
Category: BDC
Assessment period: 2023 - 2024

OUTCOMES

Code	Descriptor
	A student:
EE 12-1	demonstrates and applies insightful understanding of the dynamic, often subtle, relationship between text, purpose, audience and context, across a range of modes, media and technologies
EEX 12-2	analyses and experiments with language forms, features and structures of complex texts, discerningly evaluating their effects on meaning for different purposes, audiences and contexts
EE 12-3	independently investigates, interprets and synthesises critical and creative texts to analyse and evaluate different ways of valuing texts in order to inform and refine response to and composition of sophisticated texts
EE 12-4	critically evaluates how perspectives, including the cultural assumptions and values that underpin those perspectives, are represented in texts
EE 12-5	reflects on and evaluates the development of their conceptual understanding and the independent and collaborative writing and creative processes

COMPONENTS

WEIGHTINGS

A	Knowledge and understanding of complex texts and of how and why they are valued	25
B	Skills in: complex analysis, sustained composition and independent investigation	25

ASSESSMENT TASKS

* Times are approximate. Exact dates will be confirmed with a minimum of two weeks notice.

Term/ Week	Outcomes	Task	Component		Weight	
			A	B	Sem 1	HSC
T1/W1	EE12-1, EE12-2, EE12-4, EE12-5	Creative and reflection	10	10	100	20
T2/W6	EE12-1, EE12-2, EE12-3	Critical response – hand in	5	10		15
T3/W3-4	EE12-1, EE12-2, EE12-3, EE12-4	Trial HSC examination	10	5		15
		TOTAL	25	25		50

ENGLISH EXTENSION 2

Course: HSC
Category: BDC
Assessment period: 2023 - 2024

OUTCOMES

Code	Descriptor
	A student:
EEX 12-1	demonstrates a deep understanding of the dynamic relationship between text, composer, audience and context through the conceptualisation and execution of an extended composition using appropriate mode, medium and technology
EEX 12-2	strategically and effectively manipulates language forms and features to create a substantial extended composition for a specific purpose, audience and context
EEX 12-3	applies knowledge, understanding and insight, refined through analysis, interpretation, criticism and evaluation of strategically chosen texts, to shape new meaning in an original composition
EEX 12-4	undertakes extensive independent investigation to articulate a personal perspective that explores, challenges, speculates or evaluates a significant situation, event or idea
EEX 12-5	reflects on and evaluates the composition process and the effectiveness of their own published composition

COMPONENTS

WEIGHTINGS

A	Skills in extensive independent investigation	25
B	Skills in sustained composition	25

ASSESSMENT TASKS

* Times are approximate. Exact dates will be confirmed with a minimum of two weeks notice.

Term/ Week	Outcomes	Task	Component		Weight	
			A	B	Sem 1	HSC
T4/W9	EEX 12-1, EEX 12-4, EEX 12-5	Viva voce addressing the proposal for the major work	10	5	45%	15
T1/W8	EEX 12-1, EEX 12- 2, EEX 12-3, EEX 12-4	Literature Review – research and reflection	10	10	55% ----- 100	20
T2/W9	EEX 12-2, EEX 12-3, EEX 12-5	Critique of the creative process	5	10		15
		TOTAL	25	25		50

ENGLISH STANDARD

Course: HSC
Category: BDC
Assessment period: 2023 – 2024

OUTCOMES

Code	Descriptor
	A student:
EN 12-1	independently responds to and composes complex texts for understanding, interpretation, critical analysis, imaginative expression and pleasure
EN 12-2	uses, evaluates and justifies processes, skills and knowledge required to effectively respond to and compose texts in different modes, media and technologies
EN 12-3	analyses and uses language forms, features and structures of texts and justifies their appropriateness for purpose, audience and context and explains effects on meaning
EN 12-4	adapts and applies knowledge, skills and understanding of language concepts and literary devices in new and different contexts
EN 12-5	thinks imaginatively, creatively, interpretively, analytically and discerningly to respond to, and compose texts that include considered and detailed information, ideas and arguments
EN 12-6	investigates and explains the relationships between texts
EN 12-7	explains and evaluates the diverse ways texts can represent personal and public worlds
EN 12-8	explains and assesses cultural assumptions in texts and their effects on meaning
EN 12-9	reflects on, assesses and monitors own learning and refines individual and collaborative processes as an independent learner

COMPONENTS

WEIGHTINGS

A	Knowledge and understanding of course content	50
B	Skills in responding to texts and communication of ideas appropriate to audience, purpose and context across all modes	50

ASSESSMENT TASKS

* Times are approximate. Exact dates will be confirmed with a minimum of two weeks' notice.

Term/ Week	Outcomes	Task	Component		Weight	
			A	B	Sem 1	HSC
T4/W9	EN12-1, EN12-3, EN12-5, EN12-6, EN12-7	Texts and Human Experience: <i>Billy Eliot</i> Multi-modal presentation	15	10	50	25
T1/W9	EN12-1, EN12-3, EN12-5, EN12-7, EN12-8, EN12-9	Module B: Close study – <i>The Curious Incident of the Dog in the Night-time</i> Extended Response	15	15	50	30
					100	
T2/W10	EN12-2, EN12-3, EN12-4, EN12-5, EN12-9	Module C: <i>Craft of Writing</i> Imaginative/discursive response	5	15		20
T3/W3-4	EN12-1, EN12-3, EN12-5, EN12-6, EN12-7	Trial HSC examination (Common module, Module A, Module B, Module C)	15	10		25
		TOTAL	50	50		100

ENGLISH STUDIES

Course: HSC
Category: BDC
Assessment period: 2023- 2024

OUTCOMES

Code	Descriptor
	A student:
ES 12-1	comprehends and responds analytically and imaginatively to a range of texts, including short and extended texts, literary texts and texts from academic, community, workplace and social contexts for a variety of purposes
ES 12-2	identifies, uses and assesses strategies to comprehend increasingly complex and sustained written, spoken, visual, multimodal and digital texts that have been composed for different purposes and contexts
ES 12-3	accesses, comprehends and uses information to communicate in a variety of ways
ES 12-4	composes proficient texts in different forms
ES 12-5	develops knowledge, understanding and appreciation of how language is used, identifying and explaining specific language forms and features in texts that convey meaning to different audiences
ES 12-6	uses appropriate strategies to compose texts for different modes, media, audiences, contexts and purposes
ES 12-7	represents own ideas in critical, interpretive and imaginative texts
ES 12-8	understands and explains the relationships between texts
ES 12-9	identifies and explores ideas, values, points of view and attitudes expressed in texts, and explains ways in which texts may influence, engage and persuade different audiences
ES 12-10	monitors and reflects on own learning and adjusts individual and collaborative processes to develop as a more independent learner

COMPONENTS

		WEIGHTING
A	Knowledge and understanding of course content	50
B	Skills in: comprehending texts, communicating ideas, using language accurately, appropriately, and effectively	50

ASSESSMENT TASKS

* Times are approximate. Exact dates will be confirmed with a minimum of two weeks notice.

Term/ Week	Outcomes	Task	Component		Weight	
			A	B	Sem 1	HSC
T4/W9	ES12-1, ES12-2, ES12-3, ES12-4, ES12-7, ES12-8	Reflective response (including related material)	15	10	50	25
T1/W9	ES12-1, ES12-4, ES12-6, ES12-7, ES12-9	Travel blog (multimodal presentation)	10	10	50	20
					100	
T2/W9	ES12-1, ES12-3, ES12-4, ES12-5, ES12-8	Reading and writing task (in class)	10	15	50	25
T3/W7	ES12-1, ES12-4, ES12-5, ES12-7, ES12-10	Collection of classwork (all modules)	15	15		30
TOTAL			50	50		100

EXPLORING EARLY CHILDHOOD

Course: HSC
Category: CEC (non-ATAR)
Assessment period: 2023 – 2024

OUTCOMES

Code	Descriptor
	A student:
H1.1	analyses prenatal issues that have an impact on development
H1.2	examines major physical, social-emotional, behavioural, cognitive and language development of young children
H1.3	examines the nature in different periods in childhood – infant, toddler, preschool and the early years
H1.4	analyses the ways in which family, community and culture influence the growth and development when a child has special needs.
H1.5	examines implications for growth and development when a child has special needs
H2.1	analyses issues relating to the appropriateness of a range of services for families
H2.2	critically examines factors that influence the social world of young children
H2.3	explains the importance of diversity as a positive issue for children & their families
H2.4	analyses the role of a range of environmental factors that Have an impact on the lives of young children
H2.5	examines strategies that promote safe environments
H3.1	evaluates strategies that encourage positive behaviour in young children
H4.1	demonstrates appropriate communication skills with children/adults
H4.2	interacts appropriately with children & adults from a wide range of cultural backgrounds
H4.3	demonstrates appropriate strategies to resolve group conflict
H5.1	analyses and compares information from a variety of sources to develop an understanding of growth and development
H6.1	demonstrates an understanding of decision making process
H6.2	critically examines all issues including beliefs and values that may influence interactions with others

COMPONENTS

WEIGHTINGS

A	Knowledge and understanding	50
B	Skills	50

ASSESSMENT TASKS

* Times are approximate. Exact dates will be confirmed with a minimum of two weeks' notice.

Term/ Week	Outcome s	Task	Component		Weight	
			A	B	Sem 1	HSC
T4/W7	2.4, 2.5, 4.3, 1.2, 1.3, 1.4, 2.5, 4.1, 6.1	Child health and safety/ literature Research and analysis	20	10	60	30
T1/W8	2.3, 4.2, 6.2	Historical and cultural contexts of childhood investigation	5	15	40	20
T3/W3-4	1.5, 2.2, 2.3, 6.2	Health and safety, literature, media, special needs, food and nutrition, historical and cultural contexts of childhood Trial HSC examination	25	25		50
		TOTAL	50	50		100

FOOD TECHNOLOGY

Course: HSC
Category: BDC
Assessment period: 2023 - 2024

OUTCOMES

Code	Descriptor
	A student:
H1.1	explains manufacturing processes and technologies used in the production of food products
H1.2	examines the nature and extent of the Australian Food Industry
H1.3	justifies processes of food product development and manufacture in terms of market. Technological and environmental considerations
H1.4	evaluates the impact of the operation of an organisation within the Australian Food Industry on the individual, society and environment
H2.1	evaluates the relationship between food, its production, consumption, promotion and health
H3.1	investigates operations of one organisation within the Australian Food Industry
H3.2	independently investigates contemporary nutrition issues
H4.1	develops, prepares and presents food using product development processes
H4.2	applies principles of food preservation to extend the life of food and maintain safety.
H5.1	develops, realises and evaluates solutions for a range of food situations

COMPONENTS

WEIGHTINGS

A	Knowledge and understanding of course content	40
B	Knowledge and skills designing, researching, analysing and evaluating	30
C	Skills in experimenting with and preparing food by applying theoretical concepts	30

ASSESSMENT TASKS

* Times are approximate. Exact dates will be confirmed with a minimum of two weeks' notice.

Term/ Week	Outcomes	Task	Component			Weight	
			A	B	C	Sem 1	HSC
T4/W7	H1.2, H3.1	Australian Food Industry depth study	5	15	5	55	25
T1/W9	H1.1, H4.2	Food manufacture research	10	5	5	45	20
						100	
T2/W9	H1.3, H4.1, H5.1	Food product development	5	5	20	100	30
T3/W3-4	H1.1, H1.3, H1.4, H2.1, H3.2,	Trial HSC examination	20	5			25
		TOTAL	40	30	30		100

GEOGRAPHY

Course: HSC
Category: BDC
Assessment period: 2023-2024

OUTCOMES

Code	Descriptor
	A student:
H1	explains the changing nature, spatial patterns and interaction of ecosystems, urban places and economic activity
H2	explains the factors which place ecosystems at risk and the reasons for their protection
H3	analyses contemporary urban dynamics and applies them in specific contexts
H4	analyses the changing spatial and ecological dimensions of an economic activity
H5	evaluates environmental management strategies in terms of ecological sustainability
H6	evaluates the impacts of, and responses to, environmental change
H7	justifies geographical methods applicable and useful in the workplace and relevant to a changing world
H8	plans geographical inquiries to analyse and synthesise information from a variety of sources
H9	evaluates geographical information and sources for usefulness, validity and reliability
H10	applies maps, graphs and statistics, photographs and fieldwork to analyse and integrate data in geographical contexts
H11	applies mathematical ideas and techniques to analyse geographical data
H12	explains geographical patterns, processes and future trends through appropriate case studies and illustrative examples
H13	communicates complex geographical information, ideas and issues effectively using appropriate written and/or oral, cartographic and graphic forms

COMPONENTS

WEIGHTINGS

A	Knowledge and understanding of course content	40
B	Geographical tools and skills	20
C	Geographical inquiry and research, including fieldwork	20
D	Communication of geographical information, ideas and issues in appropriate forms	20

ASSESSMENT TASKS

* Times are approximate. Exact dates will be confirmed with a minimum of two weeks' notice.

Term/ Week	Outcomes	Task	Component				Weight	
			A	B	C	D	Sem 1	HSC
T4/W9	H2, H5, H6, H7, H8, H9, H10, H13	Ecosystems research assignment	10	5	5	10	60	30
T1/W7	H1, H3, H13	Urban places essay	10			10	40	20
							100	
T2/W9	H1, H3, H6, H13	Fieldwork task	5		15		20	
T3/W3-4	H1, H2, H3, H4, H5, H6, H9, H11, H12, H13	Trial HSC examination	15	15			30	
		TOTAL	40	20	20	20	100	

HISTORY EXTENSION

Course: HSC
Category: BDC
Assessment period: 2023-2024

OUTCOMES

Code	Descriptor
	A student:
HE 12-1	analyses and evaluates different approaches to history and the complexity of factors that shape historical interpretations
HE 12-2	plans, conducts and presents a substantial historical investigation involving analysis, synthesis and evaluation of information from historical sources of differing perspectives and historical approaches
HE 12-3	communicates through detailed, well-structured texts to explain, argue, discuss, analyse and evaluate historical issues
HE 12-4	constructs an historical position about an area of historical inquiry and discusses and challenges other positions

COMPONENTS

WEIGHTINGS

A	Knowledge and understanding of significant historiographical ideas and processes	20
B	Skills in designing, undertaking and communicating historical inquiry and analysis	30

ASSESSMENT TASKS

* Times are approximate. Exact dates will be confirmed with a minimum of two weeks' notice.

Term/ Week	Outcomes	Task	Component		Weight
			A	B	HSC
T2/W9	HE 12.1, HE 12.2, HE 12.3	Formal Proposal, process log, annotated resources		15	15
T2/W9	HE 12.1, HE 12.2, HE 12.3, HE12.4	Final Project	5	15	20
T3/W3-4	HE12.1, HE 12.3	Trial HSC examination	15		15
		TOTAL	20	30	50

HOSPITALITY (VET CURRICULUM FRAMEWORK)

Course: HSC
Category: BDC
Assessment period: 2023-2024

	Unit Code	Unit of Competency	HSC hours
Mandatory	SITXFSA005	Use hygienic practices for food safety	15
	SITXWHS006	Participate in safe food handling practices	20
	SITXWHS005	Participate in safe work practices	15
	SITXCCS011	Interact with customers	20
Kitchen operations and cookery stream	SITHCCC023	Use food preparation equipment	20
	SITHCCC027	Prepare dishes using basic methods of cookery	40
	SITHKOP009	Clean kitchen premises and equipment	15
	HLTAID011	Provide first aid	20
HSC elective	SITHCCC024	Prepare and present simple dishes	20
	SITHCCC025	Prepare and present sandwiches	20
	SITHCCC026	Package prepared foodstuffs	10
	SITHCCC028	Prepare appetisers and salads	30
	SITHCCC034	Work effectively in a commercial kitchen	25
	SITXINV006	Receive, store and maintain stock	15

Units in bold indicate HSC examinable units. Compulsory 70 hours work placement (over the 2 years).

Times are approximate. Exact dates will be confirmed with a minimum of two weeks' notice.

This is a competency-based course; weighted exam assessment marks are used to give HSC **estimated examination marks**.

The **HSC examines the two-year course**. Some units may be studied only in Year 11 or Year 12 or continuously throughout both years. Each unit is assessed at the completion of the unit

On successful completion of competencies and work placement, students will receive Certificate II Cookery in Kitchen Operations SIT20421.

Term / Week	Task Description	Weightings	Unit of Competency
2022 – Completed In Year 10	Task – written practical (External)	N/A	HLTAID011 Provide first aid (credit transfer)
2023 Term 1 Wk 10 Due 6/4/23	Task 1 – written/practical	N/A	SITXFSA005 Use hygienic practices for food safety SITXFS006 Participate in safe food handling practices
2023 Term 2 Wk 10 Due 29/6/23	Task 2 – written/practical	N/A	SITHCCC023 Use food preparation equipment. SITXWHS005 Participate in safe work practices
2023 Term 3 Wk 7	Work placement 1	N/A	Compulsory 35 hours
2023 Term 3 Wk 9-10	Preliminary examination (written examination)	N/A	SITXFSA005 Use hygienic practices for food safety SITXFS006 Participate in safe food handling practices SITHCCC023 Use food preparation equipment. SITXWHS005 Participate in safe work practices
2023 Term 4 Wk 6 Due 17/11/23	Task 3 – practical/written	N/A	SITHCCC024 Prepare and present simple dishes SITHKOP009 Clean kitchen premises & equipment
2023 Term 4 Wk 8 Due 1/12/23	Task 4 – practical/written	N/A	SITHCCC026 Prepare packaged food stuffs
2024 Term 1 Wk 5 Date - TBA	Task 5 – practical/written	N/A	SITHCCC025 Prepare and present sandwiches SITHCCC028 Prepare appetisers and salads
2024 Term 1 Date - TBA	Work placement 2	N/A	Compulsory 35 hours or RPL (subject to approval)
2024 Term 2 Wk 9 Date - TBA	Task 6 – practical/written	N/A	SITXINV006 Receive, store and maintain stock SITHCCC027 Prepare dishes using basic methods of cookery
2024 Term 3 Wk 1 Date - TBA	Task 7 – practical/written	N/A	SITXCCA011 Interact with customers.
2024 Term 3 Wk 3-4	Trial HSC examination (written examination)	100	All mandatory units of competency and associated units of competency – Kitchen Operations and Cookery stream
2024 Term 3 Wk 7 Date - TBA	Task 8 – practical/written	N/A	SITHCCC034 Work effectively in a commercial kitchen
	TOTAL	100	

NOTE: Every practical task is an assessable item towards competency. All students must be present on allocated practical days. If a student is away, it is her responsibility to collect ingredients and required paperwork on returning to school. *Students must supply own food if not collected shortly after practical lesson due to health reasons.* Submit photographic evidence of the completed practical on signed documentation within 2 weeks of the original practical lesson. Students must be included in the photographs wearing full hospitality uniform. *Theory work is associated with every practical task and must be completed by the set date in class in order to achieve full competency.*

INDUSTRIAL TECHNOLOGY: MULTIMEDIA – Delivered at St Edward’s

Course: HSC
 Category: BDC
 Assessment period: 2023 - 2024

OUTCOMES

Code	Descriptor
	A student:
H1.1	investigates industry through the study of businesses in one focus area
H1.2	identifies appropriate equipment, production and manufacturing techniques and describes the impact of new and developing technologies in industry
H1.3	Identifies important historical developments in the focus area industry
H2.1	demonstrates proficiency in the use of safe working practices and workshop equipment maintenance techniques
H3.1	is skilled in sketching, producing and interpreting drawings
H3.2	selects and applies appropriate research and problem-solving skills
H3.3	applies design principles effectively through the production of projects
H4.1	demonstrates competence in practical skills appropriate to the major project
H4.2	explores the need to outsource appropriate expertise where necessary to complement personal practical skills
H4.3	critically applies knowledge and skills related to properties and characteristics of materials/components
H5.1	selects and uses communication and information processing skills
H5.2	selects and applies appropriate documentation techniques to project management
H6.1	evaluates the characteristics of quality manufactured products
H6.2	applies the principles of quality and quality control
H7.1	evaluates the impact of the focus area industry on the social and physical environment
H7.2	analyses the impact of existing, new and emerging technologies of the focus industry on society and the environment

COMPONENTS

WEIGHTINGS

A	Knowledge and understanding of course content	40
B	Knowledge and skills in the design, management, communication Production of a major project	60

ASSESSMENT TASKS

* Times are approximate. Exact dates will be confirmed with a minimum of two weeks' notice.

Term/ Week	Outcomes	Task	Component		Weight	
			A	B	Sem 1	HSC
T4/W10	H1.2, H3.1, H3.2, H3.3, H4.3, H5.1, H5.2, H6.1, H6.2, H7.2	Design & Development Folio	15	15	60	30
T1/W4	H1.1, H1.2, H1.3, H5.1, H7.1, H7.2	Industry study multimodal	5	15	40	20
					100	
T2/W9	H2.1, H3.1, H3.2, H3.3, H4.1, H4.2, H4.3, H5.1, H5.2, H6.1, H6.2	Project Development & Management Presentation	15	25	40	40
T3/W3-4	H1.2, H1.3, H4.3, H7.1, H7.2	Trial HSC examination	5	5		10
		TOTAL	40	60		100

INDUSTRIAL TECHNOLOGY: TIMBER PRODUCTS AND FURNITURE TECHNOLOGIES

Course: HSC
Category: BDC
Assessment period: 2023 - 2024

OUTCOMES

Code	Descriptor
	A student:
H1.1	investigates industry through the study of businesses in one focus area
H1.2	identifies appropriate equipment, production and manufacturing techniques and describes the impact of new and developing technologies in industry
H1.3	Identifies important historical developments in the focus area industry
H2.1	demonstrates proficiency in the use of safe working practices and workshop equipment maintenance techniques
H3.1	is skilled in sketching, producing and interpreting drawings
H3.2	selects and applies appropriate research and problem-solving skills
H3.3	applies design principles effectively through the production of projects
H4.1	demonstrates competence in practical skills appropriate to the major project
H4.2	explores the need to outsource appropriate expertise where necessary to complement personal practical skills
H4.3	critically applies knowledge and skills related to properties and characteristics of materials/components
H5.1	selects and uses communication and information processing skills
H5.2	selects and applies appropriate documentation techniques to project management
H6.1	evaluates the characteristics of quality manufactured products
H6.2	applies the principles of quality and quality control
H7.1	evaluates the impact of the focus area industry on the social and physical environment
H7.2	analyses the impact of existing, new and emerging technologies of the focus industry on society and the environment

COMPONENTS

WEIGHTINGS

A	Knowledge and understanding of course content	40
B	Knowledge and skills in the design, management, communication Production of a major project	60

ASSESSMENT TASKS

* Times are approximate. Exact dates will be confirmed with a minimum of two weeks' notice.

Term/ Week	Outcomes	Task	Component		Weight	
			A	B	Sem 1	HSC
T4/W9	H5.1,H5.2, H7.1, H2.1, H3.3	Development and submission of major project ideas		20	50	20
T1/W9	H1.1, H1.2	Industry report	10	10	50 100	20
T3/W1	H1.1,H1.2, H3.2, H4.1, H4.2, H5.1, H6.2	Folio progress mark	10	20		30
T3/W3-4	H1.1,H1.2, H1.3,H3.1, H4.3, H6.1, H7.1, H7.2	Trial HSC examination	20	10		30
		TOTAL	40	60		100

INVESTIGATING SCIENCE

Course: HSC
Category: BDC
Assessment period: 2023 - 2024

OUTCOMES

Code	Descriptor
	A student:
INS12-1	develops and evaluates questions and hypotheses for scientific investigation
INS12-2	designs and evaluates investigations in order to obtain primary and secondary data and information
INS12-3	conducts investigations to collect valid and reliable primary and secondary data and information
INS12-4	selects and processes appropriate qualitative and quantitative data and information using a range of appropriate media
INS12-5	analyses and evaluates primary and secondary data and information
INS12-6	solves scientific problems using primary and secondary data, critical thinking skills and scientific processes
INS12-7	communicates scientific understanding using suitable language and terminology for a specific audience or purpose
INS12-12	develops and evaluates the process of undertaking scientific investigations
INS12-13	describes and explains how science drives the development of technologies
INS12-14	uses evidence-based analysis in a scientific investigation to support or refute a hypothesis
INS12-15	evaluates the implications of ethical, social, economic and political influences on science

	COMPONENTS	WEIGHTINGS
A	Knowledge and Understanding	40
B	Working Scientifically	60

ASSESSMENT TASKS

- Times are approximate. Exact dates will be confirmed with a minimum of two weeks' notice.

Term/ Week	Outcomes	Task	Component		Sem 1	Weight
			A	B		
T4/W8	INS11/12-1, INS11/12-2, INS11/12-3, INS11/12-4, INS11/12-5, INS11/12-6, INS11/12-7, INS12-12	First hand investigation (Module 5)	10	10	40	20
T1/W8	INS11/12-1, INS11/12-2, INS11/12-3, INS11/12-4, INS11/12-5, INS11/12-6, INS11/12-7, INS12-13	Secondary research task (Module 5 & 6)	5	15	60	20
					100%	
T2/W8	INS11/12-1, INS11/12-2, INS11/12-3, INS11/12-4, INS11/12-5, INS11/12-6, INS11/12-7, INS12-14	Testing a claim depth study (Module 7)	10	20		30
T3/W3-4	INS11/12-4, INS11/12-5, INS11/12-6, INS11/12-7, INS12-12, INS12-13, INS12-14, INS12-15	Trial HSC examination (Modules 1, 2, 3 & 4)	15	15		30
		TOTAL	40	60		100

LEGAL STUDIES

Course: HSC
Category: BDC
Assessment period: 2023-2024

OUTCOMES

Code	Descriptor
	A student:
H1	Identifies and applies legal concepts and terminology
H2	Describes and explains key features of and the relationship between Australian and international law
H3	Analyses the operation of domestic and international systems
H4	Evaluates the effectiveness of the legal system in addressing issues
H5	Explains the role of law in encouraging cooperation and resolving conflict, as well as initiating and responding to change
H6	Assesses the nature of the relationship between the legal system and society
H7	Evaluates the effectiveness of the law in achieving justice
H8	Locates, selects, organises, synthesises and analyses legal information from a variety of sources including legislation, cases, media, international instruments and documents
H9	Communicates legal information using well-structured and logical arguments
H10	Analyses differing perspectives and interpretations of legal information and issues

COMPONENTS

WEIGHTINGS

A	Knowledge and understanding of course content	40
B	Analysis and evaluation	20
C	Inquiry and research	20
D	Communication of legal information, issues and ideas in appropriate forms	20

ASSESSMENT TASKS

* Times are approximate. Exact dates will be confirmed with a minimum of two weeks' notice.

Term/ Week	Outcomes	Task	Component				Weight	
			A	B	C	D	Sem 1	HSC
T4/W9	H1, H4, H5, H6, H7, H8, H9	Crime: case study/media file crime essay	5	5	10	5	50	25
T1/W9	H1, H2, H3, H4, H5, H6, H7, H9, H10	Human Rights Topic Test	15	5		5	50	25
							100	
T2/W8	H2, H3, H4, H5, H6, H7, H8, H9, H10	Focus study 1: Family. Media file and related written task	5	5	10	5		25
T3/W3-4	H1, H2, H3, H4, H5, H6, H7, H9, H10	Trial HSC examination	15	5		5		25
		TOTAL	40	20	20	20		100

MATHEMATICS ADVANCED

Course: HSC
Category: BDC
Assessment period: 2023 - 24

OUTCOMES

Code	Descriptor
	A student:
MA11-1	uses algebraic and graphical techniques to solve, and where appropriate, compare alternative solutions to problems
MA11-2	uses the concepts of functions and relations to model, analyse and solve practical problems
MA11-3	uses the concepts and techniques of trigonometry in the solution of equations and problems involving geometric shapes
MA11-4	uses the concepts and techniques of periodic functions in the solutions of trigonometric equations or proof of trigonometric identities
MA11-5	interprets the meaning of the derivative, determines the derivative of functions and applies these to solve simple practical problems
MA11-6	manipulates and solves expressions using the logarithmic and index laws, and uses logarithms and exponential functions to solve practical problems
MA11-7	uses concepts and techniques from probability to present and interpret data and solve problems in a variety of contexts, including the use of probability distributions
MA11-8	uses appropriate technology to investigate, organise, model and interpret information in a range of contexts
MA11-9	provides reasoning to support conclusions which are appropriate to the context
MA12-1	uses detailed algebraic and graphical techniques to critically construct, model and evaluate arguments in a range of familiar and unfamiliar contexts
MA12-2	models and solves problems and makes informed decisions about financial situations using mathematical reasoning and techniques
MA12-3	applies calculus techniques to model and solve problems
MA12-4	applies the concepts and techniques of arithmetic and geometric sequences and series in the solution of problems
MA12-5	applies the concepts and techniques of periodic functions in the solution of problems involving trigonometric graphs
MA12-6	applies appropriate differentiation methods to solve problems
MA12-7	applies the concepts and techniques of indefinite and definite integrals in the solution of problems
MA12-8	solves problems using appropriate statistical processes
MA12-9	chooses and uses appropriate technology effectively in a range of contexts, models and applies critical thinking to recognise appropriate times for such use
MA12-10	constructs arguments to prove and justify results and provides reasoning to support conclusions which are appropriate to the context

COMPONENTS

- A Understanding, Fluency and Communicating
- B Problem Solving, Reasoning and Justification

WEIGHTINGS

- 50
- 50

ASSESSMENT TASKS

- * Times are approximate. Exact dates will be confirmed with a minimum of two weeks' notice.
- * The assessment of the Mathematics Advanced HSC course may be based on the Preliminary Mathematics Advanced course.

Term/ Week	Outcomes	Task	Component		Weight	
			A	B	Sem 1	HSC
T4/W6	MA12-8,9,10	Class test	5	5	25	10
T1/W8	MA11-1,2,3,4,5,6,7,8,9 MA12-1,3,5,6,8,9,10	Common test	15	15	75 100	30
T2/W5	MA11-1,2,5,6,9 MA12-1,2,3,4,5,6,7,9,10	Assignment/ Validation Test	15	15		30
T3/W3-4	MA11-1,2,3,4,5,6,7,8,9 MA12-1,2,3,4,5,6,7,8,9,10	Trial HSC examination	15	15		30
		TOTAL	50	50		100

MATHEMATICS EXTENSION 1

Course: HSC
Category: BDC
Assessment period: 2023 - 24

OUTCOMES

Code	Descriptor
	A student:
ME11-1	uses algebraic and graphical concepts in the modelling and solving of problems involving functions and their inverses
ME11-2	manipulates algebraic expressions and graphical functions to solve problems
ME11-3	applies concepts and techniques of inverse trigonometric functions and simplifying expressions involving compound angles in the solution of problems
ME11-4	applies understanding of the concept of a derivative in the solution of problems, including rates of change, exponential growth and decay and related rates of change
ME11-5	uses concepts of permutations and combinations to solve problems involving counting or ordering
ME11-6	uses appropriate technology to investigate, organise and interpret information to solve problems in a range of contexts
ME11-7	communicates making comprehensive use of mathematical language, notation, diagrams and graphs
ME12-1	applies techniques involving proof or calculus to model and solve problems
ME12-2	applies concepts and techniques involving vectors and projectiles to solve problems
ME12-3	applies advanced concepts and techniques in simplifying expressions involving compound angles and solving trigonometric equations
ME12-4	uses calculus in the solution of applied problems, including differential equations and volumes of solids of revolution
ME12-5	applies appropriate statistical processes to present, analyse and interpret data
ME12-6	chooses and uses appropriate technology to solve problems in a range of contexts
ME12-7	evaluates and justifies conclusions, communicating a position clearly in appropriate mathematical forms

COMPONENTS		WEIGHTINGS
A	Understanding, Fluency and Communicating	50
B	Problem Solving, Reasoning and Justification	50

ASSESSMENT TASKS

- * Times are approximate. Exact dates will be confirmed with a minimum of two weeks' notice.
- * The assessment of the Mathematics Extension 1 HSC course may be based on the Mathematics Extension 1 Preliminary course.
- * The Preliminary Mathematics Extension 1 and Mathematics Advanced courses are assumed knowledge for all assessment tasks.

Term/ Week	Outcomes	Task	Component		Weight	
			A	B	Sem 1	HSC
T4/W7	ME12-1,2,6,7	Class Test	2.5	2.5	25	5
T1/W7	ME11-1,2,3,4,5,6,7 ME12-1,3,6,7	Common test	7.5	7.5	75	15
					100	
T2/W8	ME11-1,2,3,4,5,6,7 ME12-1,2,4,6,7	Assignment/ Validation Test	7.5	7.5		15
T3/W3-4	ME11-1,2,3,4,5,6,7 ME12-1,2,3,4,5,6,7	Trial HSC examination	7.5	7.5		15
		TOTAL	25	25		50

MATHEMATICS EXTENSION 2

Course: HSC
Category: BDC
Assessment period: 2023 - 24

OUTCOMES

Code	Descriptor
	A student:
MEX12-1	understands and uses different representations of numbers and functions to model, prove results and find solutions to problems in a variety of contexts
MEX12-2	chooses appropriate strategies to construct arguments and proofs in both practical and abstract settings
MEX12-3	uses vectors to model and solve problems in two and three dimensions
MEX12-4	uses the relationship between algebraic and geometric representations of complex numbers and complex number techniques to prove results, model and solve problems
MEX12-5	uses ideas and techniques from calculus to solve problems in mechanics involving resolution of forces, resisted motion and circular motion
MEX12-6	applies techniques of integration to structured and unstructured problems
MEX12-7	uses mechanics to model and solve practical problems
MEX12-8	communicates and justifies abstract ideas and relationships using appropriate language, notation and logical argument

COMPONENTS

A Understanding, Fluency and Communicating
 B Problem Solving, Reasoning and Justification

WEIGHTINGS

50
 50

ASSESSMENT TASKS

- * Times are approximate. Exact dates will be confirmed with a minimum of two weeks' notice.
- * All Preliminary and HSC content in Mathematics Advanced and Mathematics Extension 1 is assumed knowledge for the Mathematics Extension 2 course

Term/ Week	Outcomes	Task	Component		Weight	
			A	B	Sem 1	HSC
T4/W8	MEX12-1,4,7,8	Class test	5	5	25	10
T1/W9	MEX12-1,2,5,7,8	Common test	15	15	75	30
					100	
T2/W9	MEX12-3,6,7,8	Assignment/ Validation Test	15	15		20
T3/W3-4	MEX12-1,2,3,4,5,6,7,8	Trial HSC examination	15	15		30
		TOTAL	50	50		100

MATHEMATICS STANDARD 1

Course: HSC
Category: BDC
Assessment period: 2023 - 24

OUTCOMES

Code	Descriptor
	A student:
MS11-1	uses algebraic and graphical techniques to compare alternative solutions to contextual problems
MS11-2	represents information in symbolic, graphical and tabular form
MS11-3	solves problems involving quantity measurement, including accuracy and the choice of relevant units
MS11-4	performs calculations in relation to two-dimensional figures
MS11-5	models relevant financial situations using appropriate tools
MS11-6	makes predictions about everyday situations based on simple mathematical models
MS11-7	develops and carries out simple statistical processes to answer questions posed
MS11-8	solves probability problems involving multistage events
MS11-9	uses appropriate technology to investigate, organise and interpret information in a range of contexts
MS11-10	justifies a response to a given problem using appropriate mathematical terminology and/or calculations
MS1-12-1	uses algebraic and graphical techniques to evaluate and construct arguments in a range of familiar and unfamiliar contexts
MS1-12-2	analyses representations of data in order to make predictions and draw conclusions
MS1-12-3	interprets the results of measurements and calculations and makes judgements about their reasonableness
MS1-12-4	analyses simple two-dimensional and three-dimensional models to solve practical problems
MS1-12-5	makes informed decisions about financial situations likely to be encountered post-school
MS1-12-6	represents the relationships between changing quantities in algebraic and graphical forms
MS1-12-7	solves problems requiring statistical processes
MS1-12-8	applies network techniques to solve network problems
MS1-12-9	chooses and uses appropriate technology effectively and recognises appropriate times for such use
MS1-12-10	uses mathematical argument and reasoning to evaluate conclusions, communicating a position clearly to others

COMPONENTS

WEIGHTINGS

A	Understanding, Fluency and Communicating	50
B	Problem Solving, Reasoning and Justification	50

ASSESSMENT TASKS

- * Times are approximate. Exact dates will be confirmed with a minimum of two weeks' notice.
- * The assessment of the Mathematics Advanced HSC course may be based on the Preliminary Mathematics Advanced course.

Term/ Week	Outcomes	Task	Component		Weight	
			A	B	Sem 1	HSC
T4/W8	MS1-12-3,4,9,10	Class test	5	5	25	10
T1/W5	MS1-12-3,4,5,8,9,10	Common test	15	15	75 100	30
T2/W5	MS1-12-1,4,6,9,10	Assignment/ Validation Test	15	15		30
T3/W3-4	MS1-12- 1,2,3,4,5,6,7,8,9,10	Trial HSC examination	15	15		30
		TOTAL	50	50		100

MATHEMATICS STANDARD 2

Course: HSC
Category: BDC
Assessment period: 2023 - 24

OUTCOMES

Code	Descriptor
	A student:
MS11-1	uses algebraic and graphical techniques to compare alternative solutions to contextual problems
MS11-2	represents information in symbolic, graphical and tabular form
MS11-3	solves problems involving quantity measurement, including accuracy and the choice of relevant units
MS11-4	performs calculations in relation to two-dimensional figures
MS11-5	models relevant financial situations using appropriate tools
MS11-6	makes predictions about everyday situations based on simple mathematical models
MS11-7	develops and carries out simple statistical processes to answer questions posed
MS11-8	solves probability problems involving multistage events
MS11-9	uses appropriate technology to investigate, organise and interpret information in a range of contexts
MS11-10	justifies a response to a given problem using appropriate mathematical terminology and/or calculations
MS2-12-1	uses detailed algebraic and graphical techniques to critically evaluate and construct arguments in a range of familiar and unfamiliar contexts
MS2-12-2	analyses representations of data in order to make inferences, predictions and draw conclusions
MS2-12-3	interprets the results of measurements and calculations and makes judgements about their reasonableness, including the degree of accuracy and the conversion of units where appropriate
MS2-12-4	analyses two-dimensional and three-dimensional models to solve practical problems
MS2-12-5	makes informed decisions about financial situations, including annuities and loan repayments
MS2-12-6	solves problems by representing the relationships between changing quantities in algebraic and graphical forms
MS2-12-7	solves problems requiring statistical processes, including the use of the normal distribution and the correlation of bivariate data
MS2-12-8	solves problems using networks to model decision-making in practical problems
MS2-12-9	chooses and uses appropriate technology effectively in a range of contexts, and applies critical thinking to recognise appropriate times and methods for such use
MS2-12-10	uses mathematical argument and reasoning to evaluate conclusions, communicating a position clearly to others and justifying a response

COMPONENTS

WEIGHTINGS

A	Understanding, Fluency and Communicating	50
B	Problem Solving, Reasoning and Justification	50

ASSESSMENT TASKS

- * Times are approximate. Exact dates will be confirmed with a minimum of two weeks' notice.
- * The assessment of the Mathematics HSC course may be based on the Preliminary Mathematics course.

Term/ Week	Outcomes	Task	Component		Weight	
			A	B	Sem 1	HSC
T4/W8	MS2-12-1,3,4,9,10	Class test	5	5	25	10
T1/W5	MS11- 1,2,3,4,5,6,7,8,9,10 MS-12-1,3,4,5,8,9,10	Common test	15	15	75	30
					100	
T2/W5	MS11- 1,2,3,4,5,6,7,8,9,10 MS-12-1,3,4,5,6,8,9,10	Assignment/ Validation Test	15	15		30
T3/W3-4	MS11- 1,2,3,4,5,6,7,8,9,10 MS-12- 1,2,3,4,5,6,7,8,9,10	Trial HSC examination	15	15		30
		TOTAL	50	50		100

MODERN HISTORY

Course: HSC
Category: BDC
Assessment period: 2023-2024

OUTCOMES

Code	Descriptor
	A student:
MH12-1	accounts for the nature of continuity and change in the modern world
MH12-2	proposes arguments about the varying causes and effects of events and developments
MH12-3	evaluates the role of historical features, individuals, groups and ideas in shaping the past
MH12-4	analyses the different perspectives of individuals and groups in their historical context
MH12-5	assesses the significance of historical features, people, ideas, movements, events and developments of the modern world
MH12-6	analyses and interprets different types of sources for evidence to support an historical account or argument
MH12-7	discusses and evaluates differing interpretations and representations of the past
MH12-8	plans and conducts historical investigations and presents reasoned conclusions, using relevant evidence from a range of sources
MH12-9	communicates historical understanding, using historical knowledge, concepts and terms, in appropriate and well-structured forms

COMPONENTS

WEIGHTINGS

A	Knowledge and understanding of course content	40
B	Historical skills in the analysis and evaluations of sources and interpretations	20
C	Historical inquiry and research	20
D	Communication of historical understanding in appropriate forms	20

ASSESSMENT TASKS

* Times are approximate. Exact dates will be confirmed with a minimum of two weeks' notice.

Term/ Week	Outcomes	Task	Component				Weight	
			A	B	C	D	Sem 1	HSC
T4/W9	MH12-4, MH12-6, MH12-7, MH12-9	Core topic: source analysis	5	10		5	45	20
T1/W8	MHI2-2, MHI2-3, MHI2-5, MHI2-9	National study: extended response in class essay	10		10	5	55	25
							100	
T2/W7	MHI2-2, MHI2-3, MHI2-5, MHI2-9	Peace and conflict: extended response in class essay	10		10	5		25
T3/W3-4	MHI2-1, MHI2-2, MHI2-3, MHI2-4, MHI2-5, MHI2-6, MHI2-7, MHI2-9,	Trial HSC examination	15	10		5		30
		TOTAL	40	20	20	20		100

MUSIC 1

Course: HSC
Category: BDC
Assessment period: 2023-2024

OUTCOMES

Code	Descriptor
	<i>Through activities in performance, composition, musicology and aural, a student:</i>
H1	performs stylistically, music that is characteristic of topics, studied, both as a soloist and as a member of an ensemble
H2	reads, interprets, discusses and analyses simple musical scores that are characteristic of the topics studied
H3	improvises and composes music using the range of concepts for familiar sound sources reflecting the cultural and historical contexts studied
H4	articulates an aural understanding of musical concepts and their relationships in a wide variety of musical styles
H5	critically evaluates and discusses performances and compositions
H6	critically evaluates and discusses the use of the concepts of music in works representative of the topics studied and through wide listening
H7	understands the capabilities of performing media, incorporates technologies into composition and performance as appropriate to the topics studied
H8	identifies, recognises, experiments with, & discusses the use & effects of technology in music

COMPONENTS

WEIGHTINGS

A	Performance Core	10
B	Musicology Core	10
C	Composition Core	10
D	Aural Core	25
E	Electives (Performance, Composition or Musicology)	45

ASSESSMENT TASKS

* Times are approximate. Exact dates will be confirmed with a minimum of two weeks' notice.

Term/ Week	Outcomes	Task	Component					Weight	
			A	B	C	D	E	Sem 1	HSC
T4/W9	H3, H4, H5, H6, H7, H8	Composition/ Aural Exam			10	10		50	20
T1/W8	H1, H2, H4, H5, H6, H7, H8	Core musicology (viva) Core Performance	10	10				50	20
								100	
T2/W8	H1-8*	Elective 1 And 2 - Chosen From: Performance, Composition, Musicology *Teachers will select appropriate outcomes based on elective options selected by each student.					30		30
T3/ W3-4	H1-8*	Trial HSC Exam: Aural Paper And Elective 3 - Chosen From: Performance, Composition, Musicology Elective options selected by each student. * Teachers will select appropriate outcomes based on elective options selected by each student.				15	15		30
		TOTAL	10	10	10	25	45		100

PERSONAL DEVELOPMENT, HEALTH AND PHYSICAL EDUCATION

Course: HSC
Category: BDC
Assessment period: 2023 – 2024

OUTCOMES

Code	Descriptor
	A student:
H1	describes the nature, and justifies the choice, of Australia’s health priorities
H2	analyses and explains the health status of Australians in terms of current trends and groups most at risk
H3	analyses the determinants of health and health inequities
H4	argues the case for the new public health approach to health promotion
H5	explains the different roles and responsibilities of individuals communities and governments in addressing Australia’s health priorities
H6	demonstrates a range of personal health skills that enables them to promote and maintain health
H7	explains the relationship between physiology and movement potential
H8	explains how a variety of training approaches and other interventions enhance performance and safety in physical activity
H9	explains how movement skill is acquired and appraised
H10	designs and implements training plans to improve performance
H11	designs psychological strategies and nutritional plans in response to individual performance needs
H12	analyses the influence of sociocultural factors on the way people participate in and value physical activity and sport (Option 2)
H13	selects and applies strategies for the management of injuries and the promotion of safety in sport and physical activity (Option 3)
H14	argues the benefits of health-promoting actions and choices that promote social justice
H15	critically analyses key issues affecting the health of Australians and proposes ways of working towards better health for all
H16	devises methods of gathering, interpreting and communicating information about health and physical activity concepts
H17	selects appropriate options and formulates strategies based on a critical analysis of the factors that affect performance and safe participation

COMPONENTS

WEIGHTINGS

A. Knowledge and understanding of course content	40
B. Skills in critical thinking, research, analysis and communicating	60

ASSESSMENT TASKS

* Times are approximate. Exact dates will be confirmed with a minimum of two weeks’ notice.

Term/ Week	Outcomes	Task	Component		Weight	
			A	B	Sem1	HSC
T4/W9	H7, H8, H9, H10, H11, H14, H15, H16, H17	Research & Response Core 2: Factors Affecting Performance	10	10	44	20
T1/W10	H7, H8, H9, H10, H11, H14, H15, H16, H17	Option 4 - Investigation	10	15	56	25
					100	
T2/W9	H1, H2, H3, H4, H5, H6, H16, H17	Research & Response Core 1	10	15		25
T3/W3-4	H1-H11, H13, H14, H15, H16, H17	Trial HSC examination	10	20		30
		TOTAL	40	60		100

PHYSICS

Course: HSC
Category: BDC
Assessment period: 2023-2024

OUTCOMES

Code	Descriptor
PHY12-1	A student: develops and evaluates questions and hypotheses for scientific investigation
PHY12-2	designs and evaluates investigations in order to obtain primary and secondary data and information
PHY12-3	conducts investigations to collect valid and reliable primary and secondary data and information
PHY12-4	selects and processes appropriate qualitative and quantitative data and information using a range of appropriate media
PHY12-5	analyses and evaluates primary and secondary data and information
PHY12-6	solves scientific problems using primary and secondary data, critical thinking skills and scientific processes
PHY12-7	communicates scientific understanding using suitable language and terminology for a specific audience or purpose
PHY12-12	describes and analyses qualitatively and quantitatively circular motion and motion in a gravitational field, in particular, the projectile motion of particles
PHY12-13	explains and analyses the electric and magnetic interactions due to charged particles and currents and evaluates their effect both qualitatively and quantitatively
PHY12-14	describes and analyses evidence for the properties of light and evaluates the implications of this evidence for modern theories of physics in the contemporary world
PHY12-15	explains and analyses the evidence supporting the relationship between astronomical events and the nucleosynthesis of atoms and relates these to the development of the current model of the atom

COMPONENTS

WEIGHTINGS

A	Knowledge and understanding of course content	40
B	Working Scientifically	60

ASSESSMENT TASKS

* Times are approximate. Exact dates will be confirmed with a minimum of two weeks' notice.

Term/ Week	Outcomes	Task	Component		Weight	
			A	B	Sem 1	HSC
T1 / W4	PHY12-1-7, PHY12-12	Depth Study	10	20	60	30
T1 / W9	PHY12-2, PHY12-3 PHY12-13, PHY12-14	Practical Investigation Task	5	15	40 100%	20
T2/W9	PHY12-2, PHY12-3 PHY12-4, PHY12-6, PHY12-7, PHY12-14	Research and presentation task	5	15		20
T3 / W3-4	PHY12-1-15	Trial HSC examination	20	10		30
		TOTAL	40	60		100

RETAIL SERVICES VET CURRICULUM FRAMEWORK

Course: HSC
Category: Board Developed Course
Assessment period: 2023 – 2024

Unit code	Unit of competency	HSC hours
SIRXCOM002	Work effectively in a team	15
SIRXIND001	Work effectively in a service environment	20
SIRXWHS002	Contribute to workplace health and safety	15
SIRXIND002	Organise and maintain the store environment	10
SIRXCEG001	Engage the customer	20
SIRXCEG002	Assist with customer difficulties	20
SIRXCEG003	Build customer relationships and loyalty	20
SIRXPDK001	Advise on products and services	20
SIRXSLS001	Sell to the retail customer	15
SIRXSLS002	Follow point-of-sale procedures	20
SIRRRTF001	Balance and secure point-of-sale terminal	15
SIRXRSK001	Identify and respond to security risks	15
SIRRINV001	Receive and handle retail stock	20
SIRRMER001	Produce visual merchandise displays	20

Units in bold indicate HSC examinable units. **Compulsory 70 hours work placement (over the 2 years)**

- Times are approximate. Exact dates will be confirmed with a minimum of two weeks' notice.
- This is a competency-based course and examinations are used for HSC **estimates** only. Other units are assessed via Class Assessment Events at the completion of the unit.
- The **HSC examines the two-year course**. (see HSC examinable units in bold above)
- On successful completion of all units and work placement, students gain Certificate III in Retail Services SIR30216
- This is a course delivered across Catholic Schools, NSW.

Term/Week	Unit of competency	Task Description	Weighting
Term 2 Week 1 2023	SIRXIND001, SIRXCOM002	Event 1	N/A
Term 3 Week 2 2023	SIRXWHS002, SIRXIND002	Event 2	N/A
Term 3 Week 5 or 6 2023	Compulsory 35 hours of work placement	Work placement 1	N/A
Term 3 Week 9 2023		Preliminary Course Examination	N/A
Term 4 Week 4 2/11/2023	SIRXCEG001, SIRXCEG002, SIRXCEG003	Event 3	N/A
Term 1 2024 Week – TBA	Compulsory 35 hours of work placement	Work placement 2	N/A
Term 2 2024 Week – 4	SIRXPDK001, SIRXSLS001, SIRXSLS002, SIRRRTF001	Event 4	N/A
Term 3 2024 Week 2	SIRXRSK001, SIRRMER001, SIRRINV001	Event 5	N/A
Term 3 2024 Week 3-5	SIRXCOM002, SIRXIND001, SIRXWHS002, SIRXCEG001, SIRXPDK001, SIRXSLS001, SIRXSLS002, SIRXRSK001, SIRRMER001	Trial HSC Examination	100
		TOTAL	100

SCIENCE EXTENSION

Course: HSC
Category: BDC
Assessment period: 2023 – 2024

OUTCOMES

Code	Descriptor
	A student:
SE-1	Refines and applies the Working Scientifically process in relation to scientific research.
SE-2	Analyses historic and cultural observations, ethical considerations and philosophical arguments involved in the development of scientific knowledge and scientific methods of inquiry.
SE-3	Interrogates relevant and valid peer-reviewed scientific research to develop a scientific research question, hypothesis, proposal and plan.
SE-4	Uses statistical applications, mathematical processes and/or modelling to gather, process, analyse and represent reliable and valid data sets.
SE-5	Analyses and applies the processes used in reliable and valid scientific research to solve complex scientific problems and inform further research.
SE-6	Analyses and reports on a contemporary issue or an application of science informed by either primary or secondary-sourced data, or both, in relation to relevant publicly available data sets.
SE-7	Communicates analysis of an argument or conclusion incorporating appropriate scientific language and referencing techniques in a scientific report.

COMPONENTS	WEIGHTINGS
A Communicating scientifically	15
B Gathering, recording, analysing and evaluating data	15
C Application of scientific research skills	20

ASSESSMENT TASKS

* Times are approximate. Exact dates will be confirmed with a minimum of two weeks' notice.

Term/ Week	Outcomes	Task	Component			Weight	
			A	B	C	Sem 1	HSC
T1/W3	SE-2, SE-3, SE-5, SE-7	Literature Review and oral presentation	7.5	2.5	5	100	15
T2/W6	SE-1, SE-6, SE-7	Statistical Analysis	2.5	7.5	5		15
T3/W1	SE-1-SE-7	Scientific Research Report	5	5	10		20
		TOTAL	15	15	20		50

SOCIETY AND CULTURE

Course: HSC
Category: BDC
Assessment period: 2023-2024

OUTCOMES

Code	Descriptor
	A student:
H1	evaluates and effectively applies social and cultural concepts
H2	explains the development of personal, social and cultural identity
H3	analyses relationships and interactions within and between social and cultural groups
H4	assesses the interaction of personal experience and public knowledge in the development of social and cultural literacy
H5	analyses continuity and change and their influence on personal and social futures
H6	evaluates social and cultural research methods for appropriateness to specific research tasks
H7	selects, organises, synthesises and analyses information from a variety of sources for usefulness, validity and bias
H8	uses planning and review strategies to conduct ethical social and cultural research that is appropriate for tasks ranging from the simple to the complex
H9	applies complex course language and concepts appropriate for a range of audiences and contexts
H10	communicates complex information, ideas and issues using appropriate written, oral and graphic forms

COMPONENTS

WEIGHTINGS

A	Knowledge and understanding of course content	50
B	Application and evaluation of social and cultural research methods	30
C	Communication of information, ideas and issues in appropriate forms	20

ASSESSMENT TASKS

* Times are approximate. Exact dates will be confirmed with a minimum of two weeks' notice.

Term/ Week	Outcomes	Task	Component			Weight	
			A	B	C	Sem 1	HSC
T1/W1	H1, H4, H6, H7, H8, H9, H10	PIP Proposal and research task		20		45	20
T1/W7	H1, H2, H3, H5, H9, H10	Topic Test: Core and Case Study - Social and Cultural Continuity and Change	15		10	55	25
						100	
T2/W5	H1, H2, H3, H9, H10	Topic Test: Depth Study One – Surf Culture	10	10	5		25
T3/W3-4	H1, H2, H3, H4, H5, H9, H10	Trial HSC examination	25		5		30
		TOTAL	50	30	20		100

STUDIES IN CATHOLIC THOUGHT

Course: HSC
Category: BEC
Assessment period: 2023-2024

OUTCOMES

Code	Descriptor
	A student:
SCT12-1	Analyses how Scripture and other relevant Church documents, with the integration of faith and reason, continues to guide the Church
SCT12-2	Describes the theology of the principal teachings and philosophy of the Catholic Church and key developments over time, which have shaped the Church's response to a range of issues.
SCT12-3	Describes the significance of historical features and developments of the Catholic Church with reference to key people and issues
SCT12-4	Explains the contributions of the Catholic tradition to the understanding of what is good, true and beautiful in society, using a range of examples
SCT12-5	Analyses the role of the Catholic Church in guiding believers in facing the challenges of society
SCT12-6	Synthesises and interprets a range of writings including Scripture and Church documents that inform Catholic theology
SCT12-7	Explains and evaluates developments in theological and philosophical traditions of the Catholic Church to support a religious understanding
SCT12-8	Explains and evaluates the human expression of Catholic faith
SCT12-9	Plans and conducts investigations into a range of religious issues, and presents Catholic thinking using relevant evidence and sources
SCT12-10	Communicates religious understanding using theological knowledge, religious concepts and terms, in appropriate and well-structured forms

COMPONENTS

WEIGHTINGS

A	Knowledge and understanding of course content	20
B	Religious skills in: using Scripture and Catholic Church documents analysis, synthesis and evaluation based on evidence from theology, philosophy, scripture and other relevant sources	10
C	Inquiry and research skills	10
D	Communication of religious ideas and understanding in appropriate forms	10

ASSESSMENT TASKS

*Times are approximate. Exact dates will be confirmed with a minimum of two weeks' notice.

Term/ Week	Outcomes	Task	Component				Weight	
			A	B	C	D	Sem 1	HSC
T4/W9	SCT12-1, SCT12-2, SCT12-4, SCT12-5, SCT12-7, SCT12-10	Multi-modal presentation with in class component	5	5		5	100	15
T1/W9	SCT12-1,SCT12-5, SCT12-6,SCT12-8, SCT12-9,SCT12-10	Research Task with in class compon ent	5		10	5		20
T3/W3-4	SCT12-1, SCT12-2, SCT12-3, SCT12-4, SCT12-5, SCT12-10	Trial HSC examination	10	5				15
		TOTAL	20	10	10	10		50

STUDIES OF RELIGION I

Course: HSC
Category: BDC
Assessment period: 2023-2024

OUTCOMES

Code	Descriptor
	A student:
H1	explains aspects of religion and belief systems
H2	describes and analyses the influence of religion and belief systems on individuals and society
H3	examines the influence and expression of religion and belief systems in Australia
H4	describes and analyses how aspects of religious traditions are expressed by their adherents
H5	evaluates the influence of religious traditions in the life of adherents
H6	organises, analyses and synthesises relevant information about religion from a variety of sources, considering usefulness, validity and bias
H7	conducts effective research about religion and evaluates the findings from the research
H8	applies appropriate terminology and concepts related to religion and belief systems
H9	coherently and effectively communicates complex information, ideas and issues using appropriate written, oral and graphic forms.

COMPONENTS

WEIGHTINGS

A	Knowledge and understanding of course content	20
B	Source-based skills	10
C	Investigation and research	10
D	Communication of information, ideas and issues in appropriate forms	10

ASSESSMENT TASKS

* Times are approximate. Exact dates will be confirmed with a minimum of two weeks' notice.

Term/ Week	Outcomes	Task	Component				Weight	
			A	B	C	D	Sem 1	HSC
T4/W9	H1,H2,H3,H6, H7,H8,H9	Short answer responses to source material	5	5		5	100	15
T2/W2	H1,H2,H4,H5, H6,H7,H8,H9	Research essay with an in class component	5		10			15
T3/W3- 4	H1,H2,H3,H4, H5,H6,H8,H9	Trial HSC examination	10	5		5		20
		TOTAL	20	10	10	10		50

STUDIES OF RELIGION II

Course: HSC
Category: BDC
Assessment period: 2023-2024

OUTCOMES

Code	Descriptor
	A student:
H1	explains aspects of religion and belief systems
H2	describes and analyses the influence of religion and belief systems on individuals and society
H3	examines the influence and expression of religion and belief systems in Australia
H4	describes and analyses how aspects of religious traditions are expressed by their adherents
H5	evaluates the influence of religious traditions in the life of adherents
H6	organises, analyses and synthesises relevant information about religion from a variety of sources, considering usefulness, validity and bias
H7	conducts effective research about religion and evaluates the findings from the research
H8	applies appropriate terminology and concepts related to religion and belief systems
H9	coherently and effectively communicates complex information, ideas and issues using appropriate written, oral and graphic forms.

COMPONENTS

WEIGHTINGS

A	Knowledge and understanding of course content	40
B	Source based skills	20
C	Investigation and research	20
D	Communication of information, ideas and issues in appropriate forms	20

ASSESSMENT TASKS

* Times are approximate. Exact dates will be confirmed with a minimum of two weeks' notice.

Term/ Week	Outcomes	Task	Component				Weight	
			A	B	C	D	Sem 1	HSC
T4/W7	H1,H2,H3,H6, H7,H8,H9	Short answer responses to source material	5		10	5	45	20
T1/W8	H1,H2,H6,H8,H9	In class short answers with marking criteria	10	5	5	5	55	25
							100	
T2/W7	H1,H2,H4,H5,H6, H7,H8,H9	Research essay with an in-class component.	5	10	5	5		25
T3/W3-4	H1,H2,H3,H4, H5,H6,H8,H9	Trial HSC examination	20	5		5		30
		TOTAL	40	20	20	20		100

TEXTILES AND DESIGN

Course: HSC
Category: BDC
Assessment period: 2023 - 2024

OUTCOMES

Code	Descriptor
	A student:
H1.1	critically analyses and explains the factors that have contributed to the design and manufacture of the Major Textiles Project
H1.2	designs a textile item/s that demonstrates an understanding of functional and aesthetic requirements
H1.3	identifies the principles of colouration for specific end-users
H2.1	communicates design concepts and manufacturing specifications to both technical and non-technical audiences
H2.2	demonstrates proficiency in the manufacture of a textile item/s
H2.3	effectively manages the design and manufacture of a Major Textiles Project to completion
H3.1	explains the interrelationship between fabric, yarn and fibre properties
H3.2	Develops knowledge and awareness of emerging textile technologies
H4.1	justifies the selection of fabric, yarn, fibre and fabric finishing techniques for specific end-users
H4.2	selects and justifies manufacturing techniques, materials and equipment for a specific end-use
H5.1	investigates and describes aspects of marketing in the textile industry
H5.2	analyses and discusses the impact of current issues on the Australian textiles industry
H6.1	analyses the influence of historical, cultural and contemporary developments of textiles

COMPONENTS

WEIGHTINGS

A	Knowledge and understanding of textiles and the Textile Industry	50
B	Skills in design, manipulation, experimentation, analysis, manufacture and selection of textiles for specific end purposes using appropriate technologies	50

ASSESSMENT TASKS

* Times are approximate. Exact dates will be confirmed with a minimum of two weeks' notice.

Term/ Week	Outcomes	Task	Component		Weight	
			A	B	Sem 1	HSC
T4/W9	H1.3, H2.3	Fabric decoration folder and MTP project proposal	10	15	62	25
T1/W3	H1.1, H2.1, H6.1	Presentation		15	38	15
					100	
T2/W9	H1.1, H1.2, H2.1, H2.2, H2.3, H6.1, H3.1, H4.2	MTP management and progress	15	15	30	30
T3/W3-4	H1.3, H2.1, H3.1, H3.2, H4.1, H5.1, H5.2, H6.1	Trial HSC examination	25	5		30
		TOTAL	50	50		100

VISUAL ARTS

Course: HSC
Category: BDC
Assessment period: 2023- 2024

OUTCOMES

Code	Descriptor
	A student:
H1	initiates and organises artmaking practice that is sustained, reflective and adapted to suit particular conditions
H2	applies their understanding of the relationships among the artist, artwork, world and audience through the making of a body of work
H3	demonstrates an understanding of the frames when working independently in the making of art
H4	selects and develops subject matter and forms in particular ways as representations in artmaking
H5	demonstrates conceptual strength in the production of a body of work that exhibits coherence and may be interpreted in a range of ways
H6	demonstrates technical accomplishment, refinement and sensitivity appropriate to the artistic intentions within a body of work
H7	applies their understanding of practice in art criticism and art history
H8	applies their understanding of the relationships among the artist, artwork, world and audience
H9	demonstrates an understanding of how the frames provide for different orientations to critical and historical investigations of art
H10	constructs a body of significant art histories, critical narratives and other documentary accounts of representation in the Visual Arts

COMPONENTS

WEIGHTINGS

A	Artmaking	50
B	Art criticism and art history	50

ASSESSMENT TASKS

* Times are approximate. Exact dates will be confirmed with a minimum of two weeks' notice.

Term/ Week	Outcomes	Task	Component		Weight	
			A	B	Sem 1	HSC
T1/W3	H1, H2, H3, H4, H5, H6	VAPD and developing Body of Work - Artmaking <i>Critical dialogue and submission of developing Body of Work, VAPD and historical/critical study of influencing artists practice</i>	20	5	62	25
T1/W9-10	H7, H8, H9, H10	Written Extended Response- Art Criticism and Art History (In class)		15	38 100	15
T3/W5	H1, H2, H3, H4, H5, H6	Resolving the Body of Work- Artmaking <i>Submission of BOW</i>	30			30
T3/W3-4	H7, H8, H9, H10	Trial HSC examination -Art Criticism and Art History		30		30
		TOTAL	50	50		100

YEAR 12 2024 HSC ASSESSMENT HANDBOOK ACKNOWLEDGEMENT

I _____, (print name) acknowledge that I have received the 2023 St Joseph's Catholic College HSC Assessment Handbook.

I am aware of the assessment policy and schedules contained within the handbook and the requirements for each course, particularly the sections relating to **non-presentation of a task by the due date prior to a task and the penalties which can be applied.**

I acknowledge that students achieve to the best of their abilities and potential by taking responsibility for the outcome of their education. To assist with this I should:

- organise an efficient program of study and work
- complete and submit all assessment tasks by the due date and to the best of my ability
- seek advice and assistance from teachers and discuss any needs I have with them
- seek clarification from teachers to avoid any misunderstandings regarding marks awarded for specific tasks
- read and keep this assessment handbook in an accessible place for reference
- know that this HSC assessment handbook can be located on the college website
- ensure my parents/carers are familiar with the assessment policy in this handbook
- be familiar with all assessment requirements and deadlines for each course.

Student signature: _____ Pastoral class: _____

Parent/carer name: _____

Parent/carer signature: _____

Date: _____

**This page is to be left in the handbook.
A separate duplicate colour sheet has been issued to all students separately. It is to be completed and returned to Homeroom teachers.**

HSC assessment task distribution 2023-24

Week	Term 4	Term 1	Term 2	Term 3
1		Society and Culture English Extension 1	Biology English Advanced Studies of Religion 2	Science Extension Community and Family Studies Industrial Technology Timber
2		Economics	Economics Studies of Religion 1	
3		Textiles Science Extension Visual Arts		TRIALS
4		Ancient History Physics Multimedia		
5		Mathematics Standard 1 Mathematics Standard 2	Society and Culture Mathematics Advanced Mathematics Standard 1 Mathematics Standard 2 Visual Arts Engineering Studies	
6	Mathematics Advanced	Engineering Studies	Ancient History Science Extension English Extension 1	
7	Business Studies Mathematics Extension 1 Exploring Early Childhood Food Technology Engineering Studies Studies of Religion 2	Geography Society and Culture Mathematics Extension 1	Modern History Studies of Religion 2	English Studies
8	Ancient History Mathematics Extension 2 Mathematics Standard 1 Mathematics Standard 2 Investigating Science	Modern History Music Business Studies Chemistry Mathematics Advanced Exploring Early Childhood English Extension 2 Earth & Enviro Science Investigating Science	Legal Studies Mathematics Extension 1 Music Chemistry Investigating Science	
9	Drama PDHPE: Core 2 Modern History Legal Studies Music Geography Community and Family Business Studies Industrial Technology Timber Textiles Studies of Religion 1 Studies in Catholic Thought English Studies English Standard English Advanced English Extension 2	Legal Studies Mathematics Extension 2 Community and Family Studies Food Technology English Studies English Standard Physics Visual Arts Industrial Technology Timber Studies in Catholic Thought	PDHPE: Core 1 History Extension Economics Business Studies Geography Mathematics Extension 2 Food Technology Textiles English Studies English Extension 2 Earth & Enviro Science Physics Multimedia	
10	Earth & Enviro Science Chemistry Multimedia Biology	PDHPE: Option 4 Drama	Drama Biology English Advanced English Standard	